

# Woosim Windows driver & VCP driver installation

**WOOSIM SYSTEMS Inc.**  
**#501, Daerung Technotown 3th,**  
**448, Gasan-Dong, GeumChun-Ku,**  
**Seoul, Korea**  
**Tel : +82-2-2107-3700**  
**Fax : +82-2-2107-3707**  
**URL: <http://www.woosim.com>**

# Contents

1. Install Windows driver(Auto).....	3
2. Install Windows driver(hand-operated).....	6
3. Change printer properties and printing test.....	13
4. Sample Printing.....	19
5. Install VCP driver(hand-operated) – USB version printer .....	24
6. Delete VCP driver – USB version printer.....	34

## 1. Install Windows driver(Auto)

1) After click executer file, and then click 'Next' button



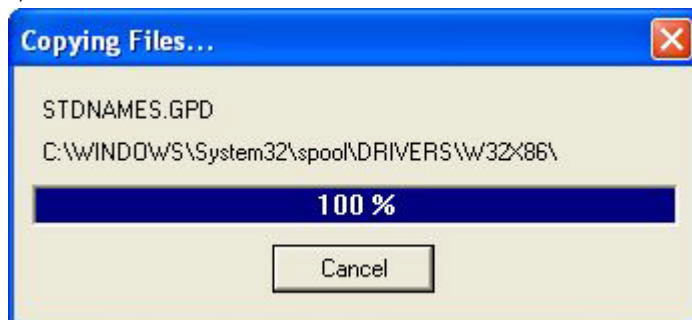
2) After select printer, and then click 'next' button



3) After select printer port, and then click 'Next' button



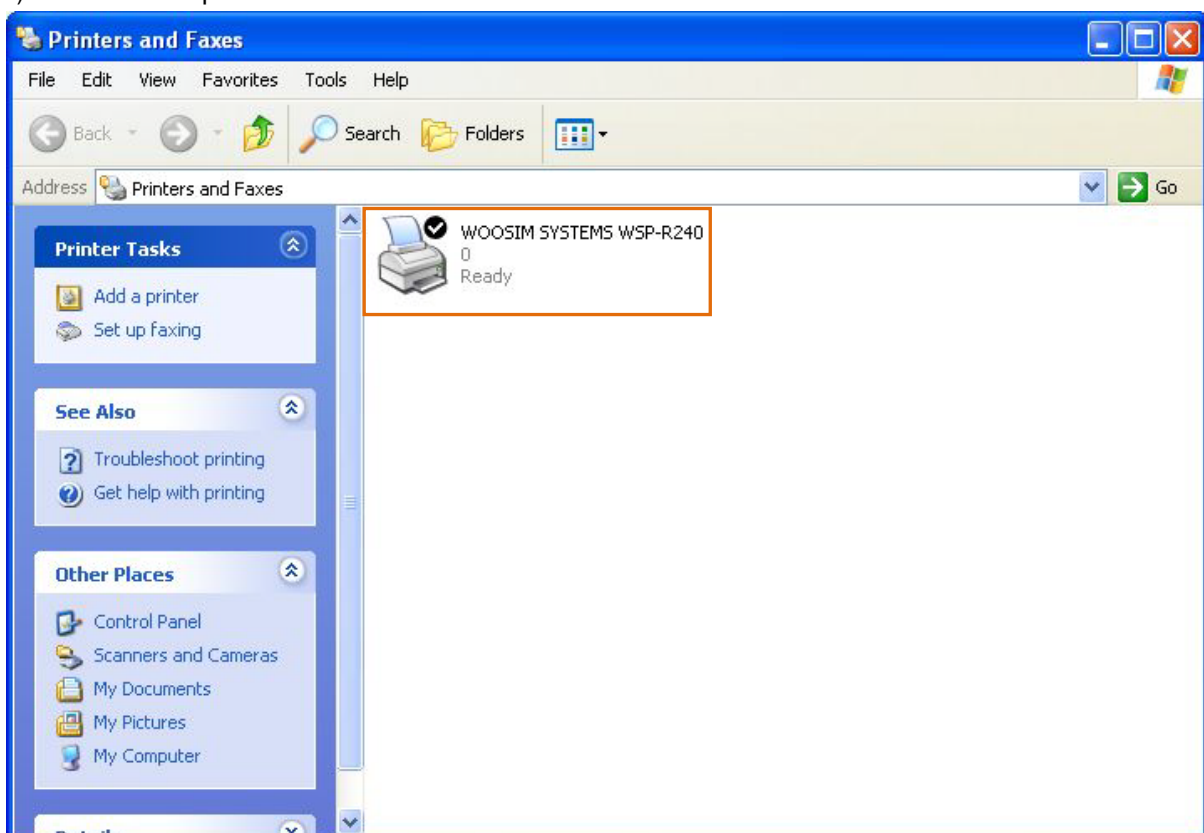
4) install



5) Click OK button

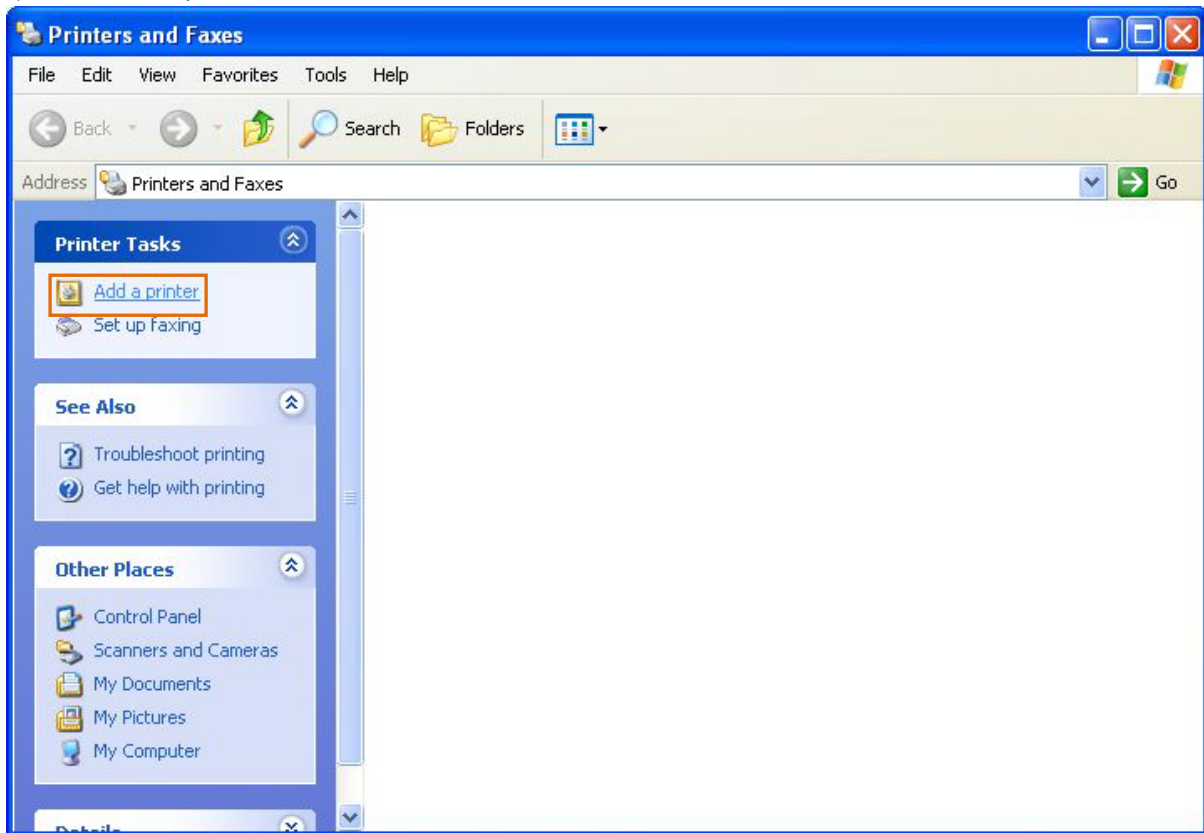


6) Check added printer in Printers and Faxes folder



## 2. Install Windows driver(hand-operated)

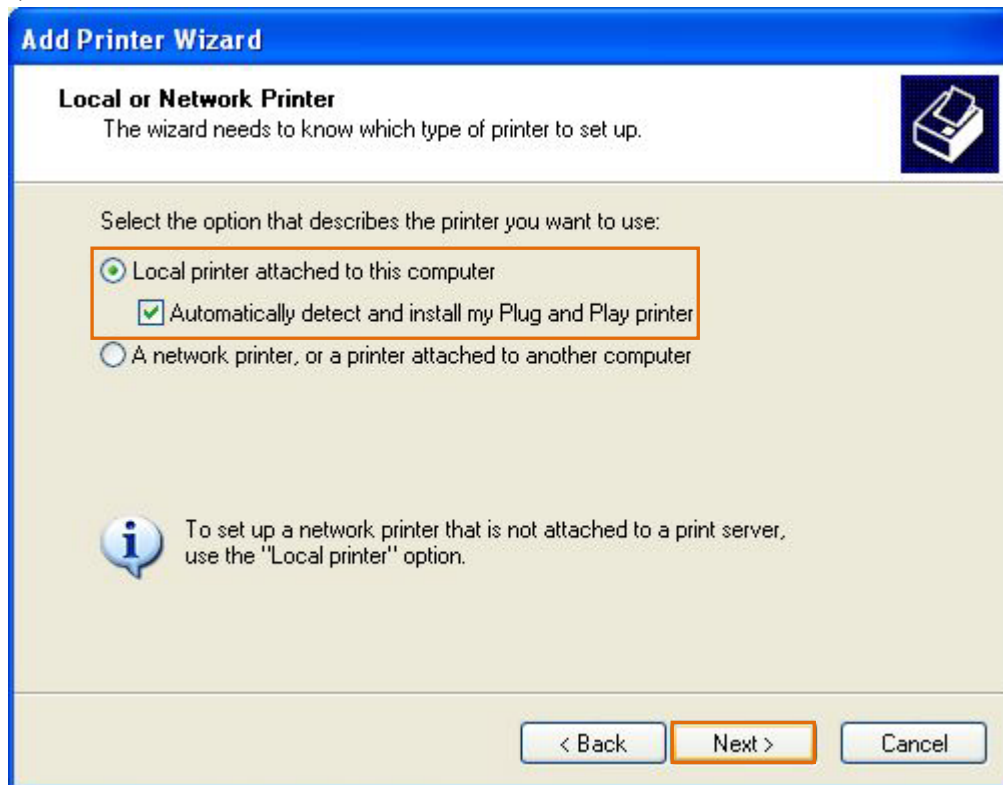
1) Click 'Add a printer' in Printers and Faxes folder



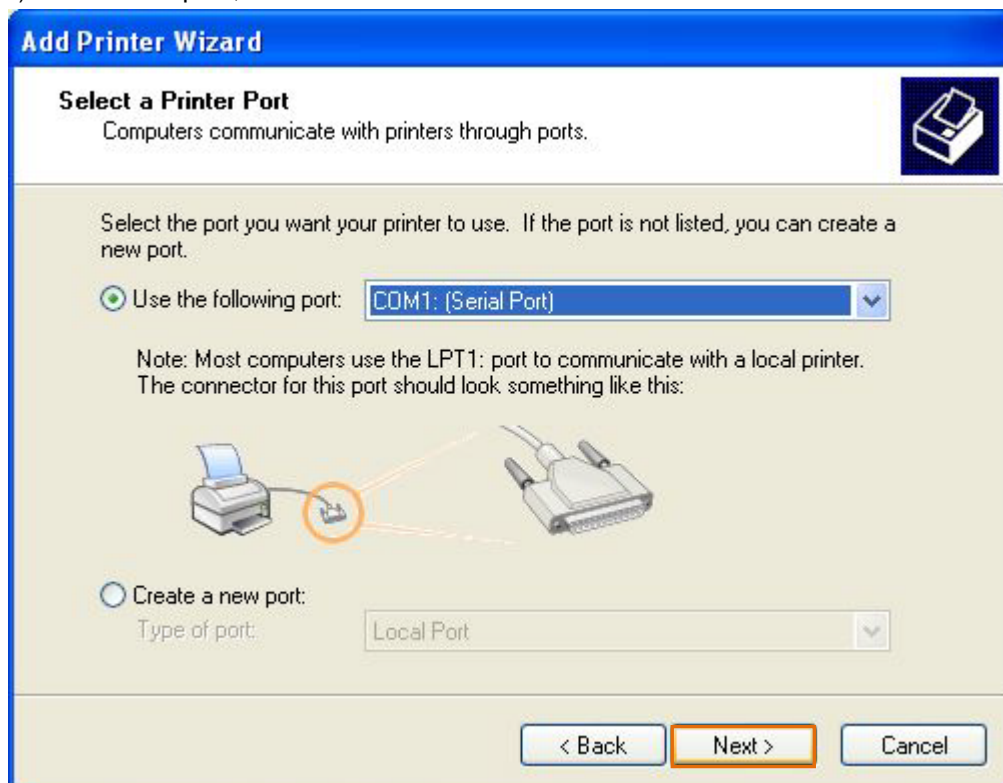
2) Click Next button



3) Click Next button

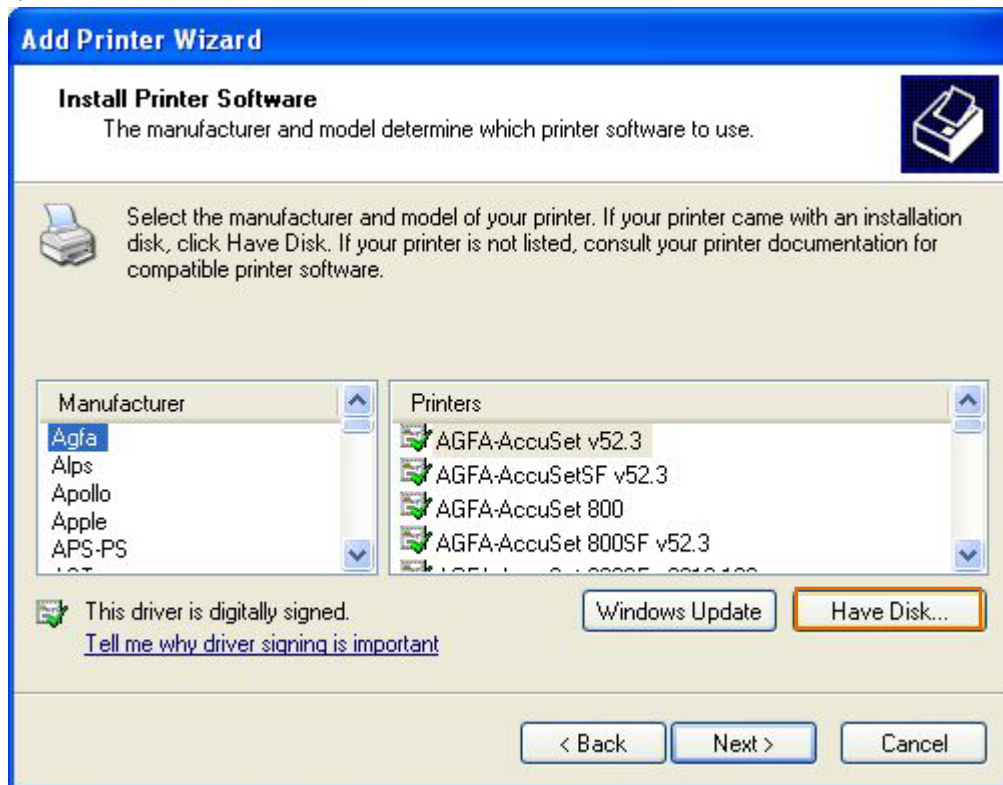


4) After select port, and then click Next button

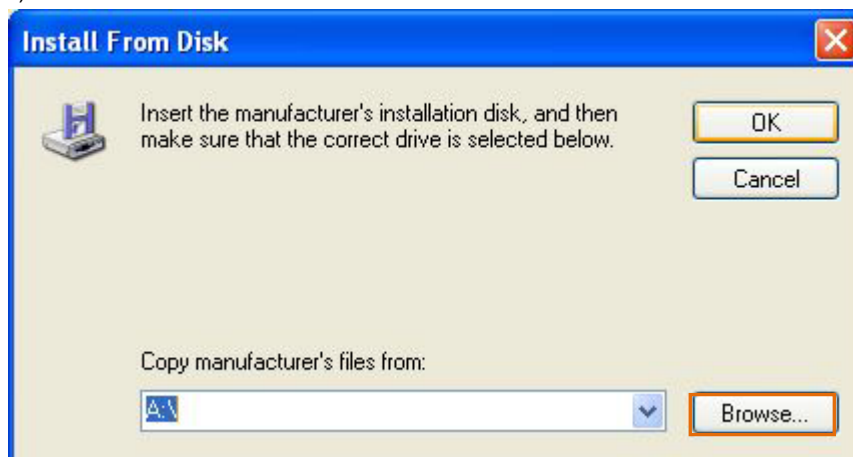




5) Click Have Disk button

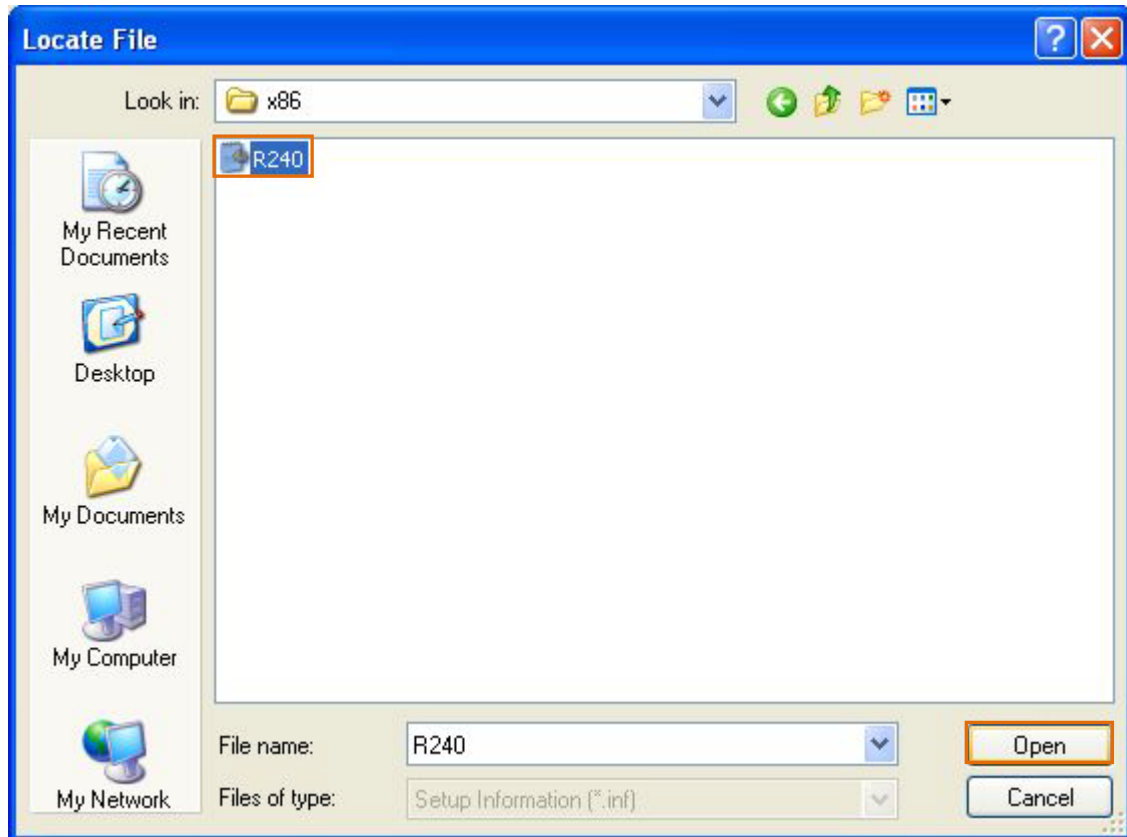


6) Click Browser button

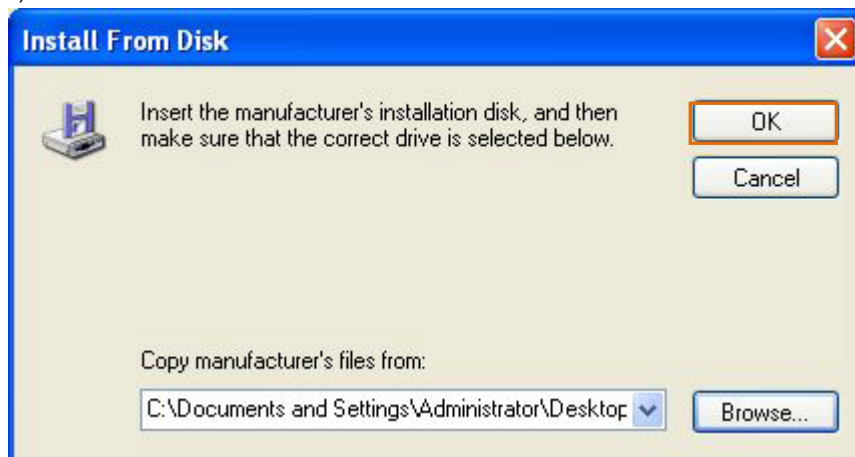




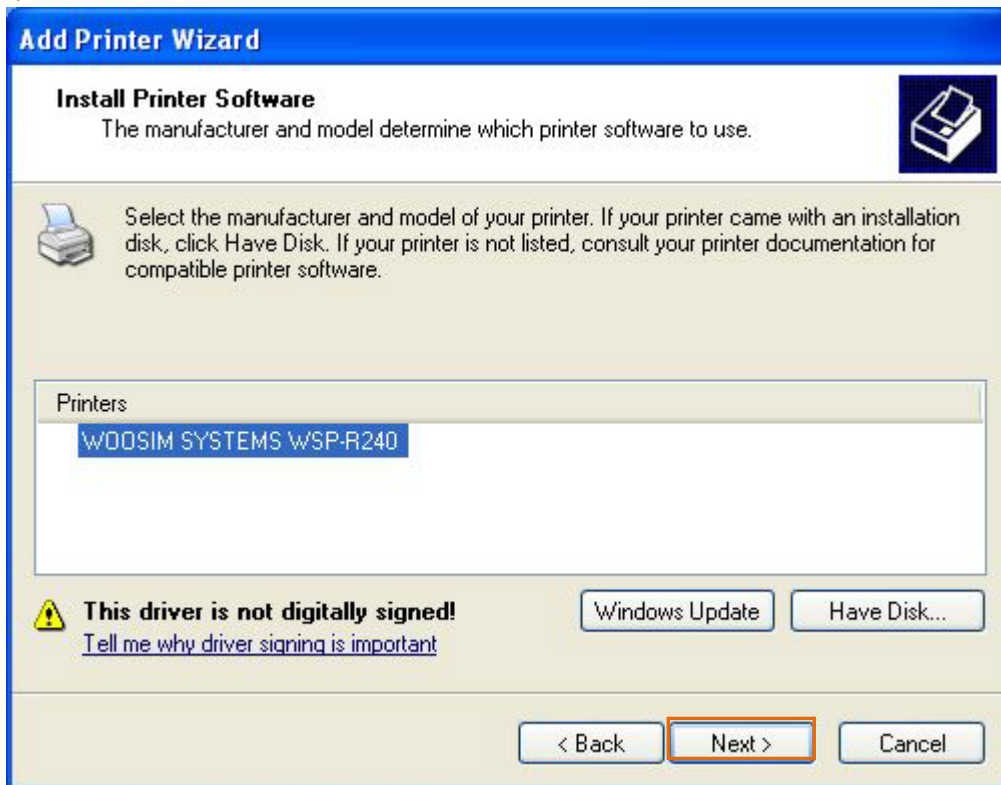
7) After select inf file at downloaded Woosim Windows driver folder and then click Open button



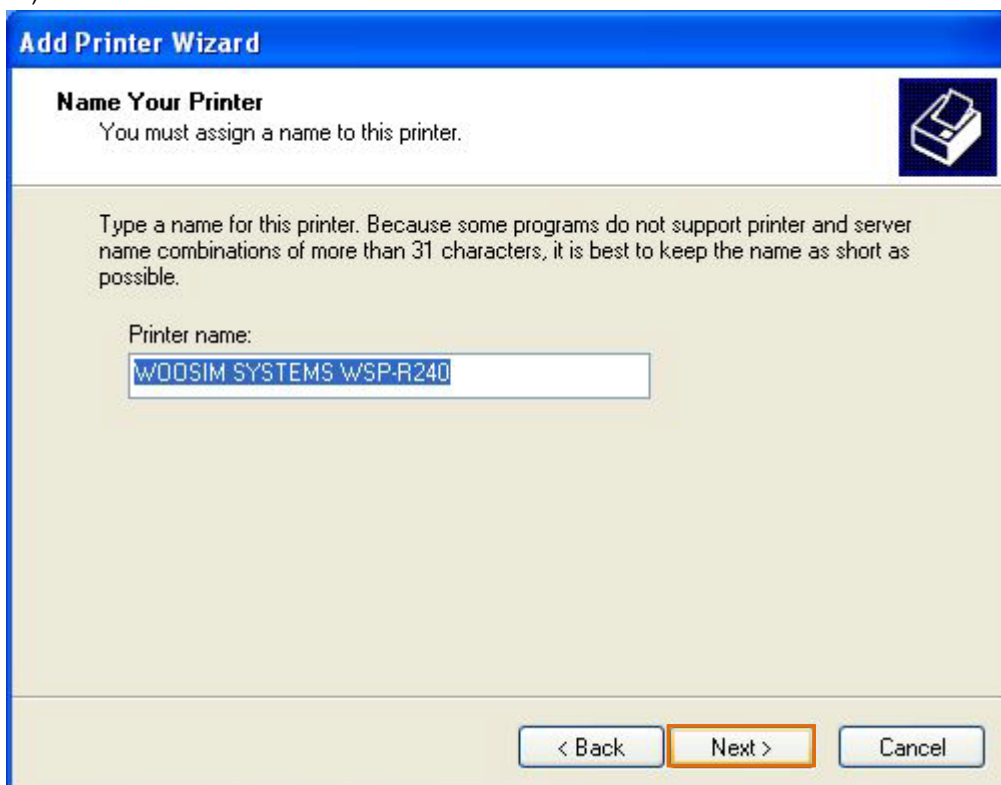
8) Click OK button



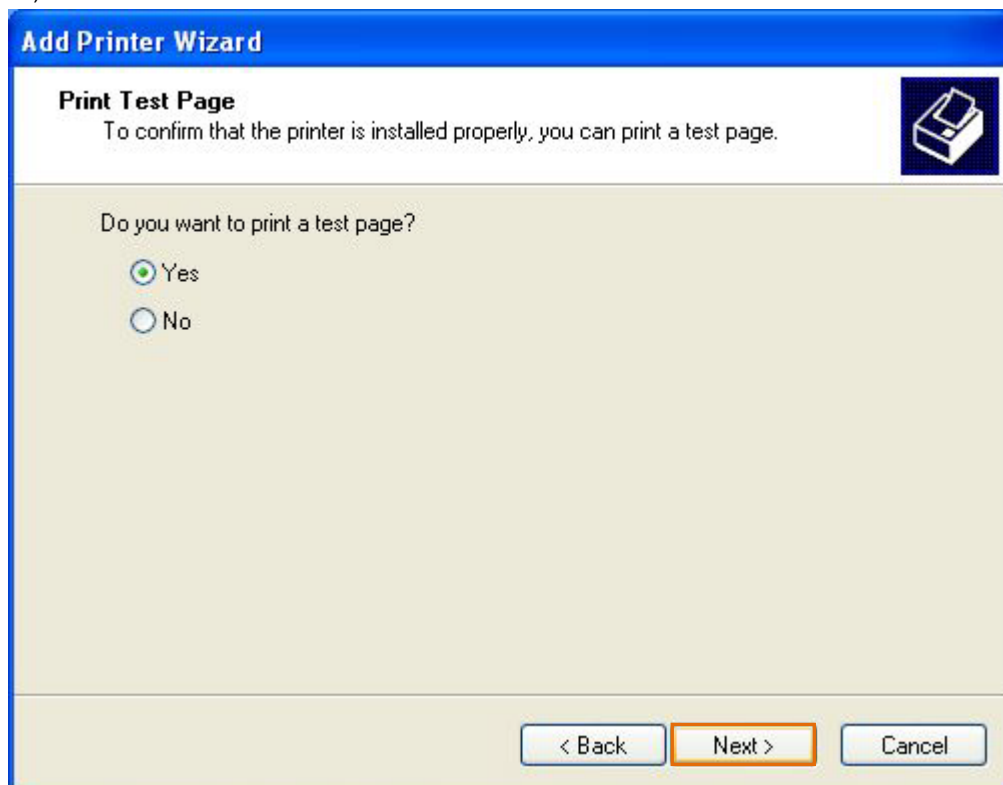
9) Click Next button



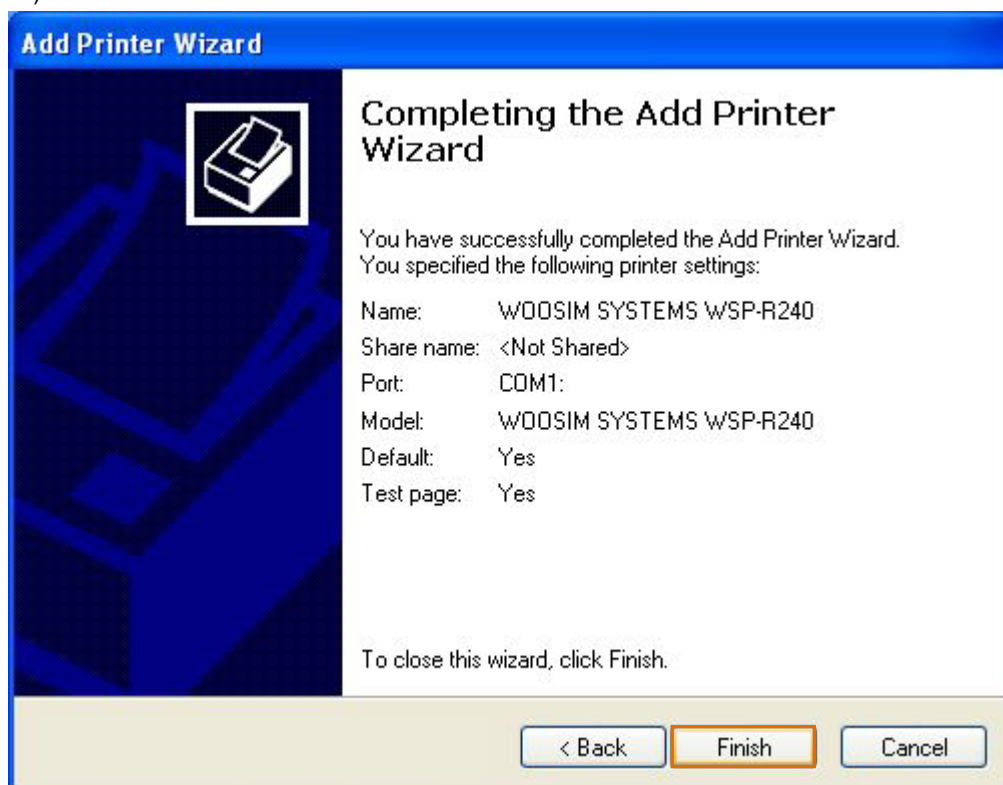
10) Click Next button



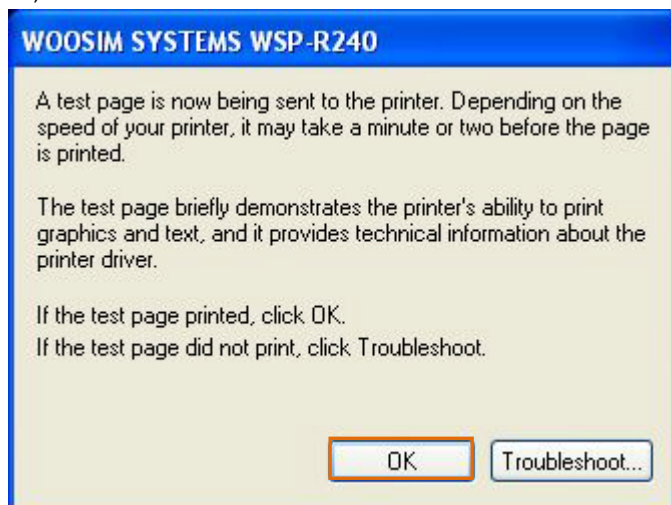
11) Click Next button



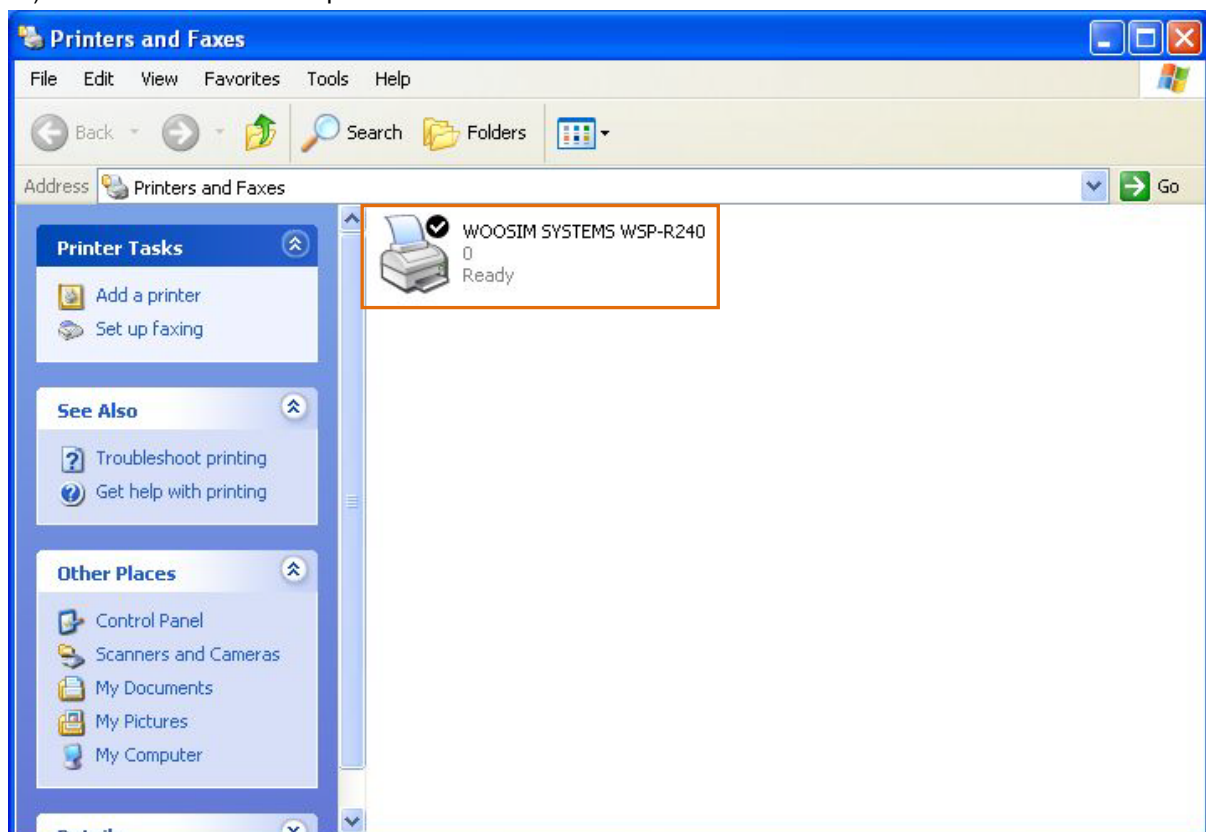
12) Click Finish button



13) Click OK button

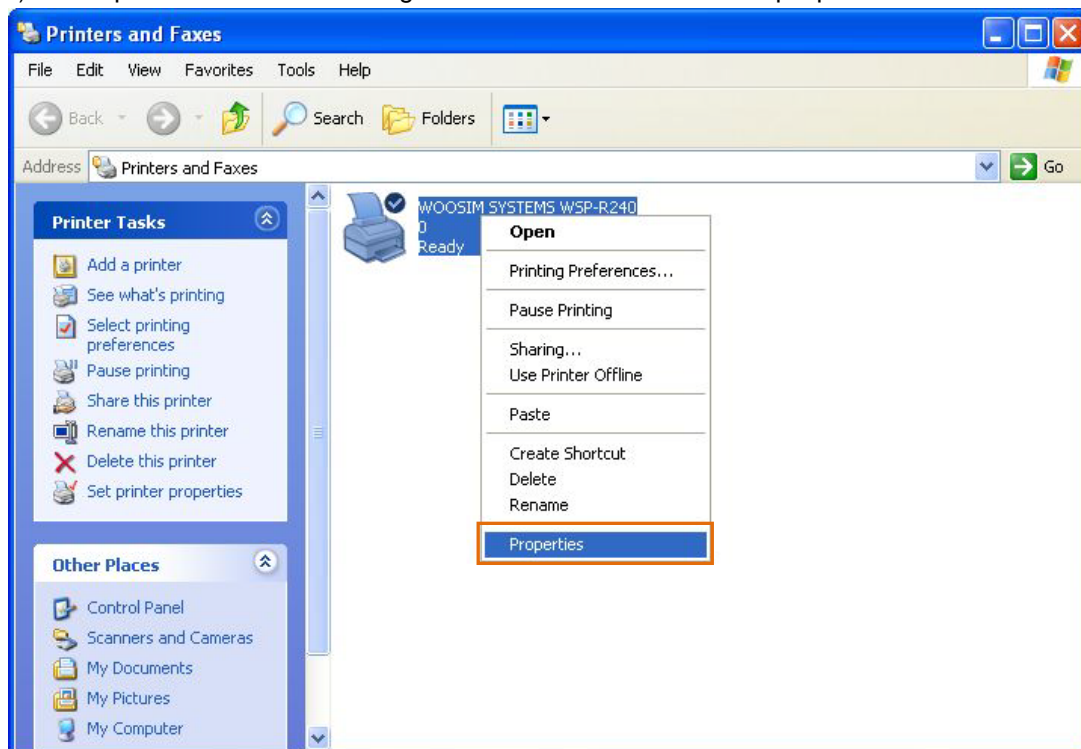


14) Check added Woosim printer

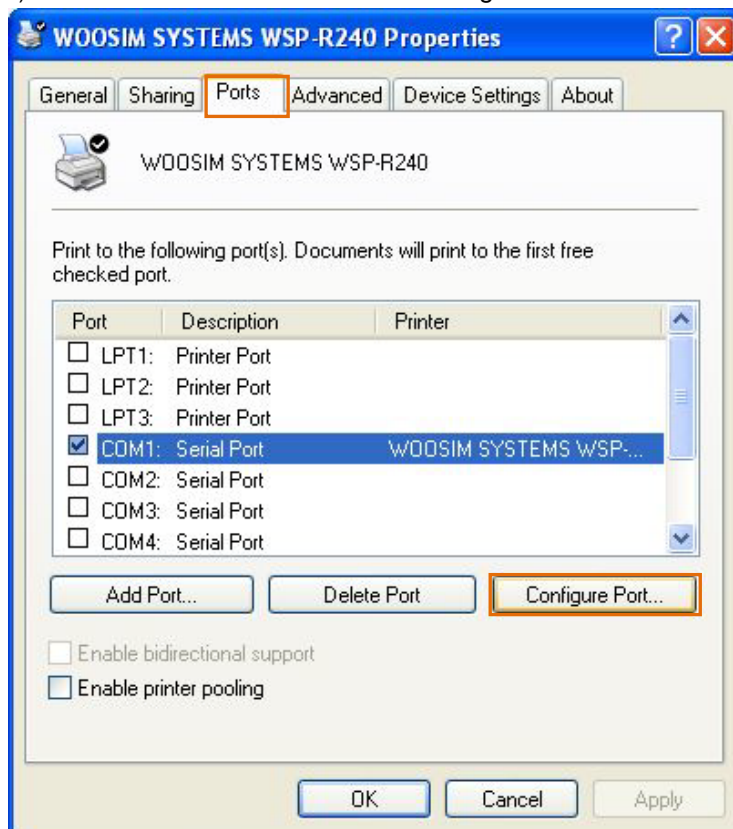


### 3. Change printer properties and printing test

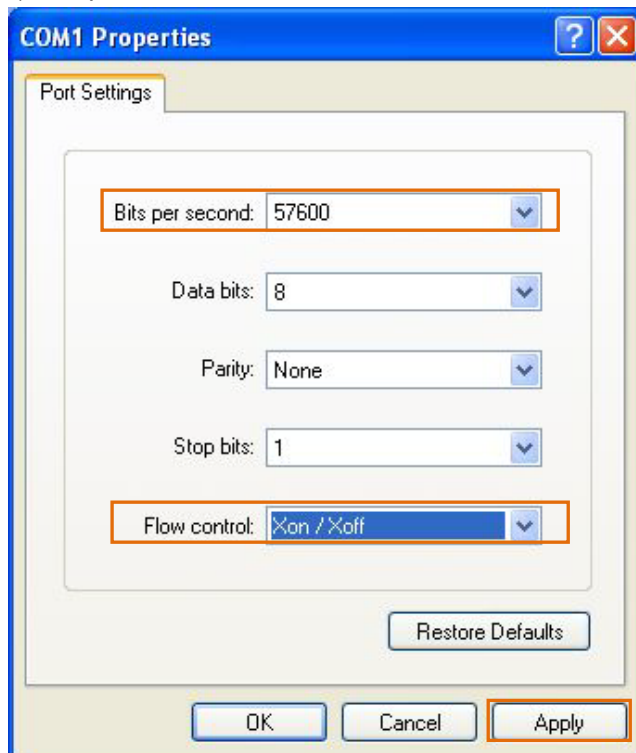
1) select printer and then click right button at mouse à select properties



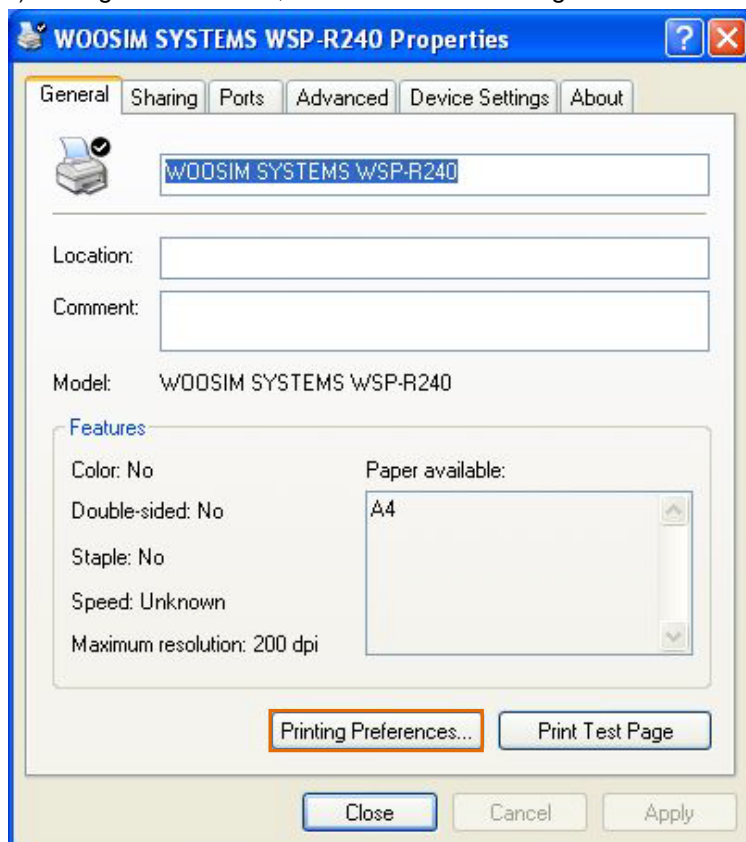
2) Select Ports tab and then click Configure Port button



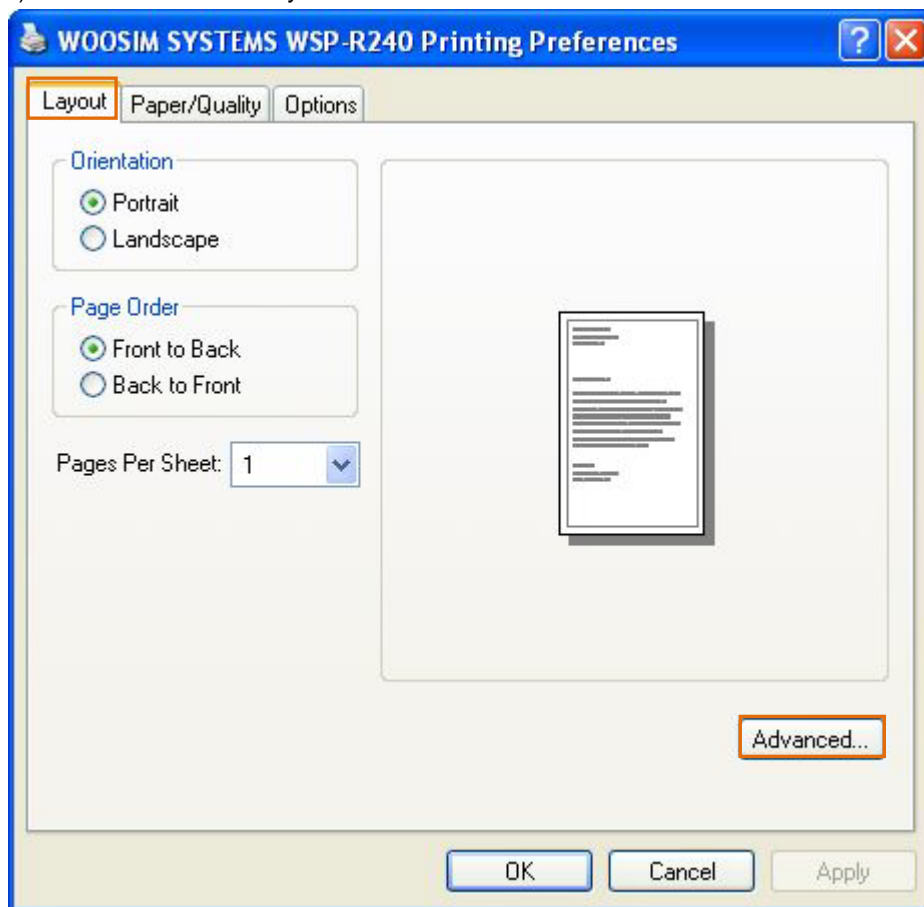
3) Bits per second and Flow control and then click Apply button



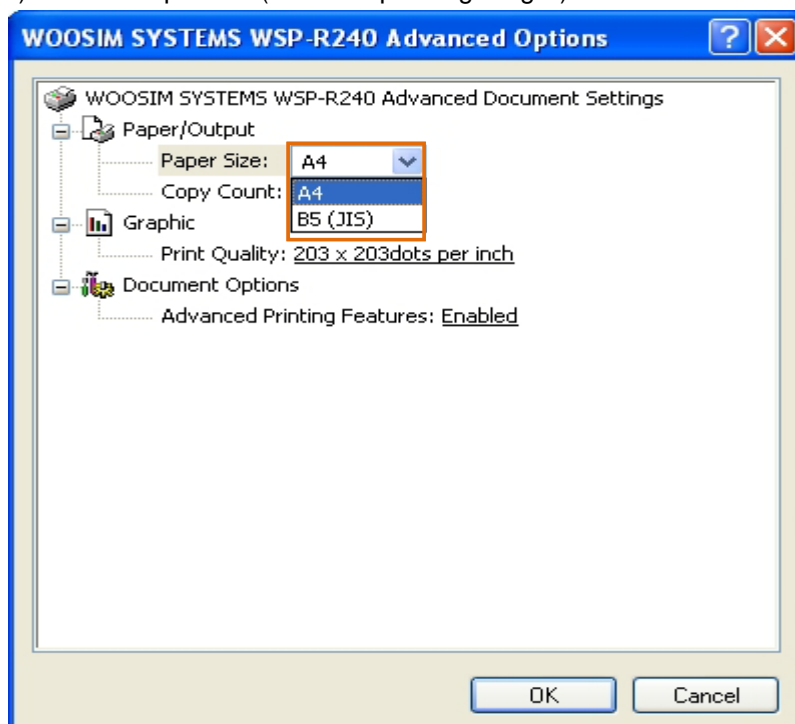
4) Change General tab, and then click Printing Preferences button



5) Click Advanced in Layout tab

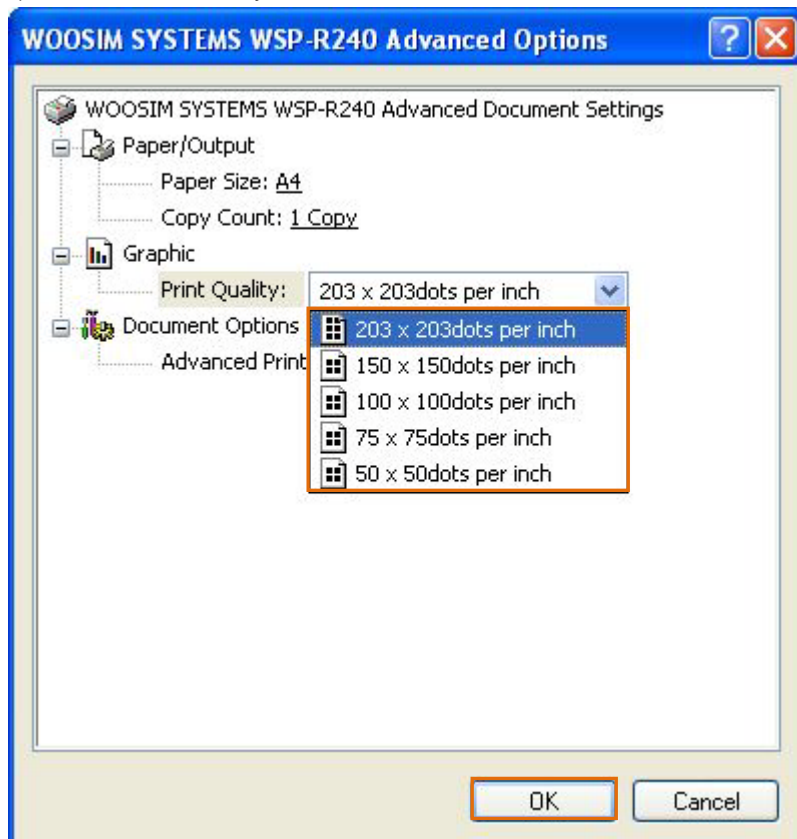


6) Choose Paper Size(related to printing length)





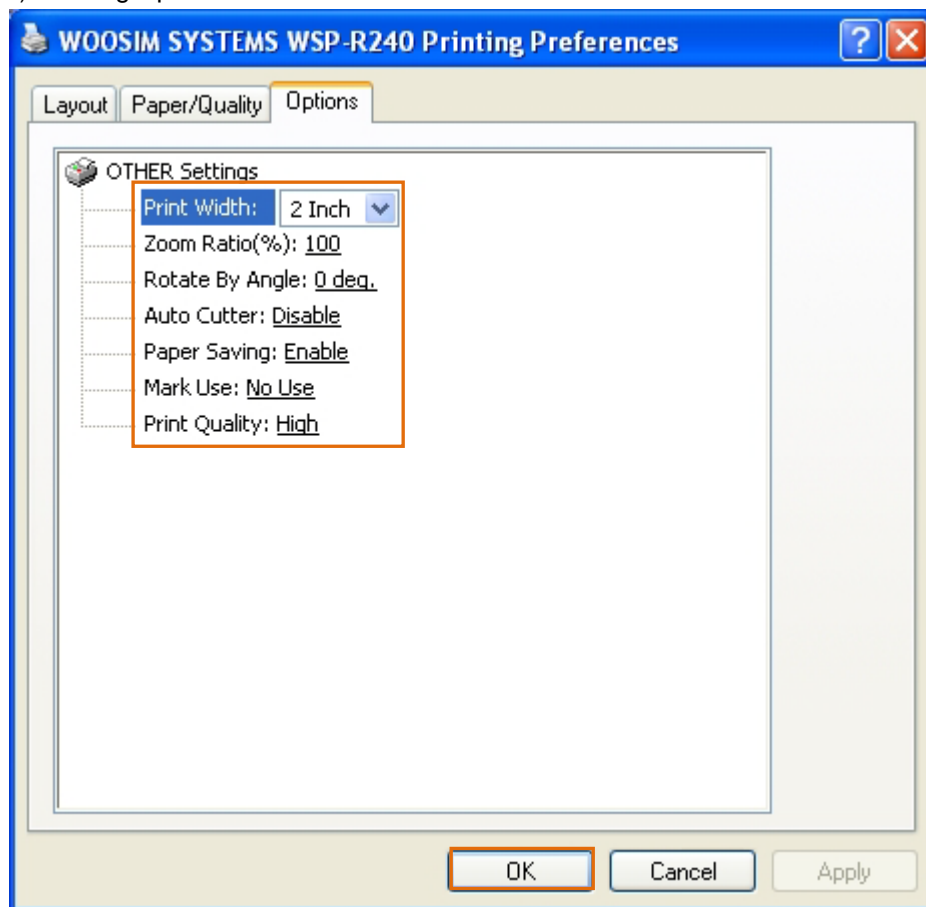
## 7) Select Print Quality



Set printing size

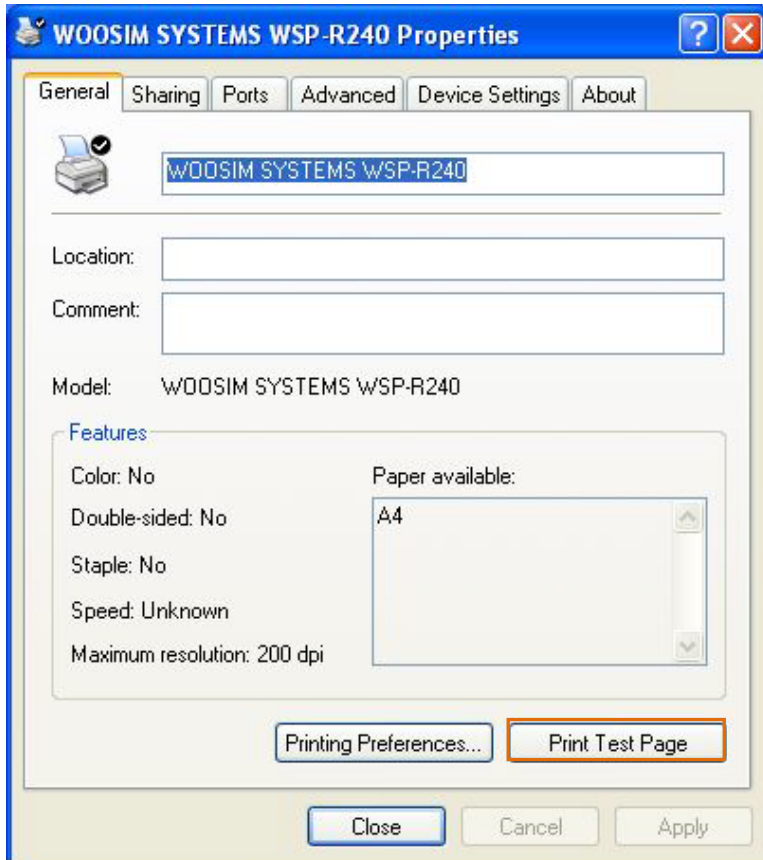
203 X 203 dpi	Standard size
150 X 150 dpi	75% of standard size
100 X 100 dpi	50% of standard size
75 X 75 dpi	25% of standard size

## 8) Printing options



Print Width	fixed
Zoom Ratio(%)	Adjust the print ratio. (Range : 1 ~ 120)
Rotate By Angle	Set printing direction
Auto Cutter	Auto cutter function in printer with a cutter
Paper Saving	Printing start to end of data or printing start to fixed paper size
Mark Use	If you set printer mode Mark Use for printing label paper.
Print Quality	Medium printing per line High printing at once

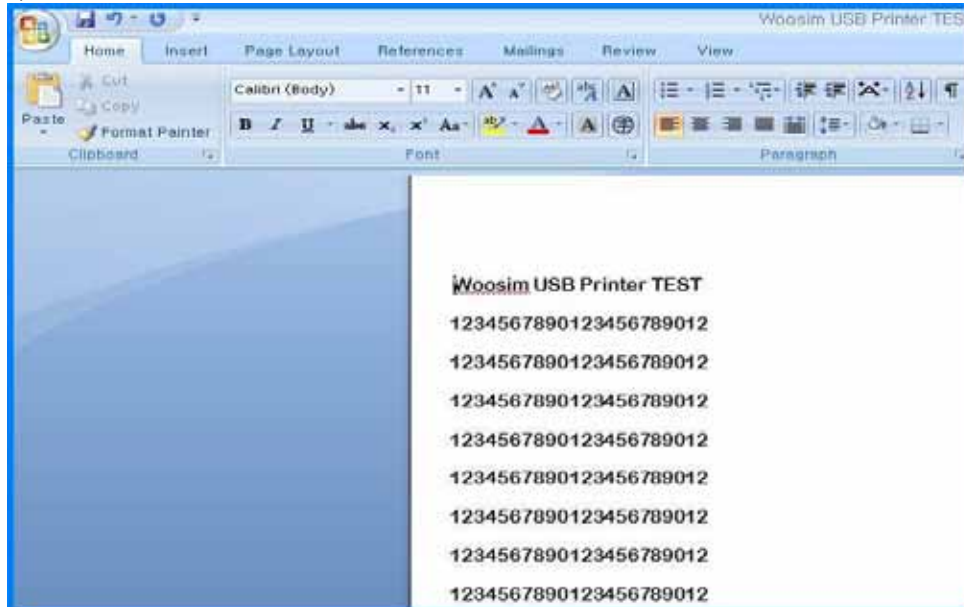
9) Click 'Print Test Page' button



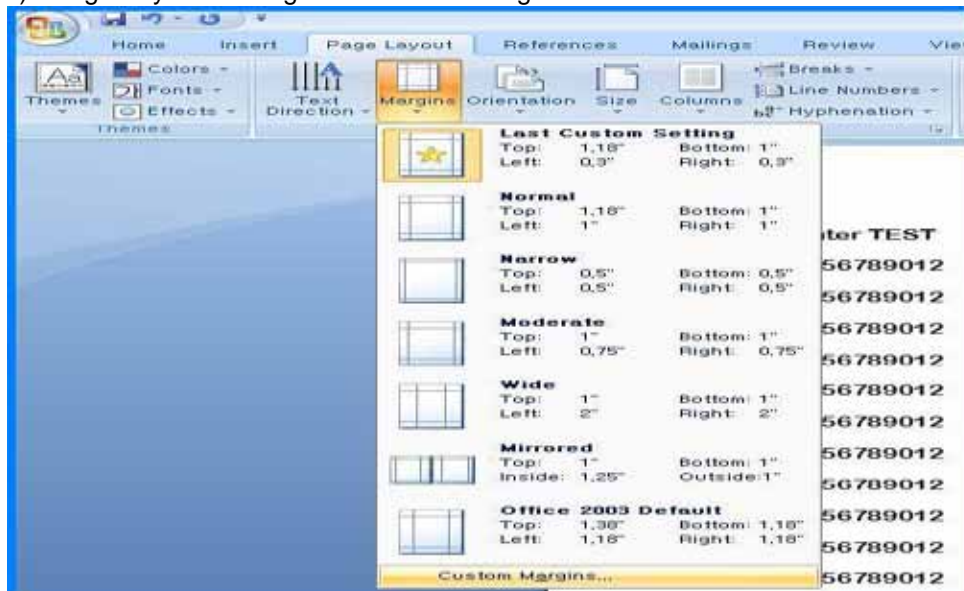
## 4. Sample Printing

<MS-Word>

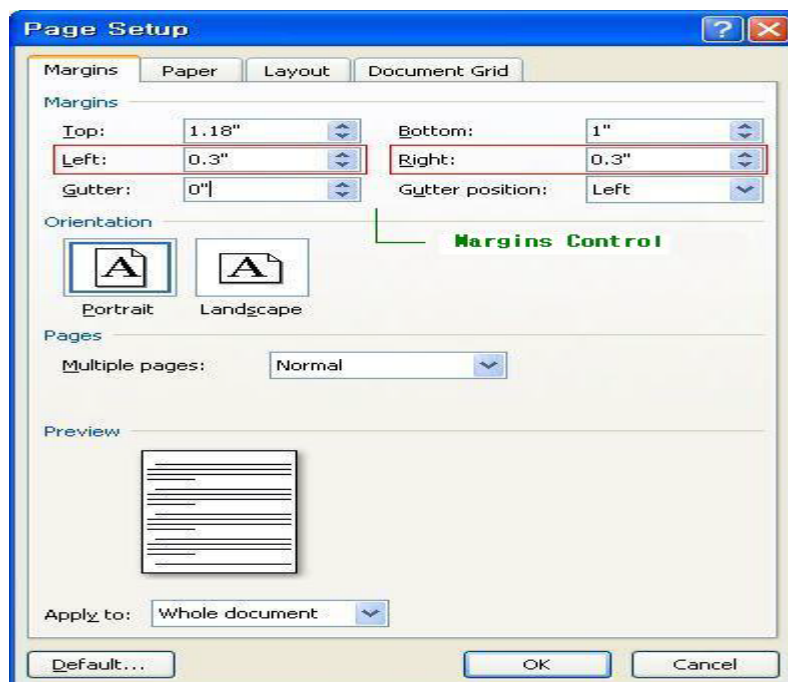
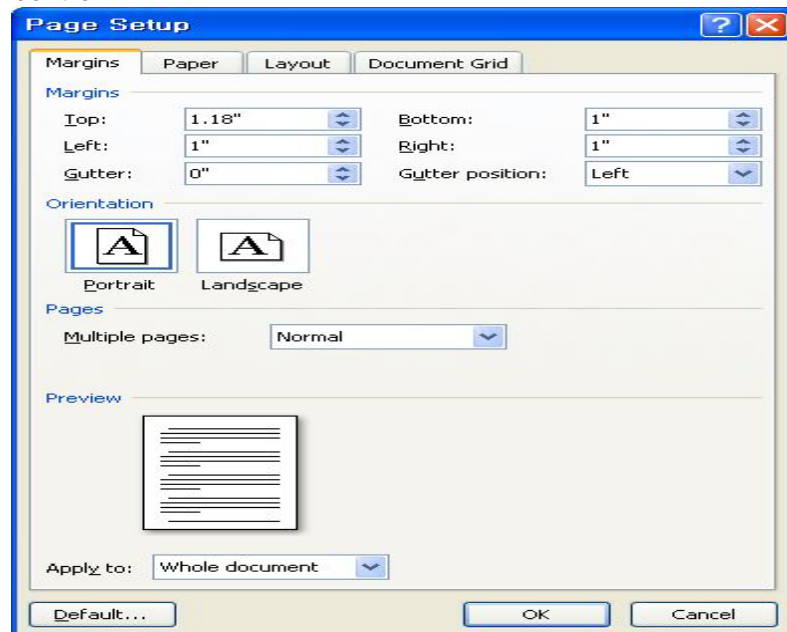
1) MS-Word 2007 Execution.



2) Page Layout – Margins – Custom Margins Select .



### 3) Margins control.



4) Print – Woosim Systems Printer Series select.

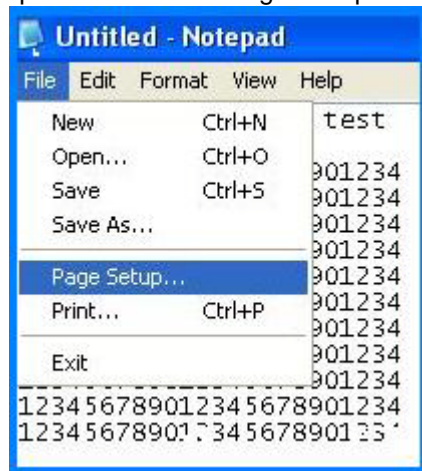
The screenshot shows a standard Windows-style 'Print' dialog box. The title bar is blue with a question mark and a close button. The main area is divided into several sections:

- Printer:** A dropdown menu shows 'Woosim Systems Printer Series'. To its right are buttons for 'Properties', 'Find Printer...', 'Print to file', and 'Manual duplex'.
- Page range:** Contains radio buttons for 'All' (selected), 'Current page', and 'Pages:'. Below the 'Pages:' button is a text input field and a descriptive note: 'Type page numbers and/or page ranges separated by commas counting from the start of the document or the section. For example, type 1, 3, 5-12 or p1s1, p1s2, p1s3-p8s3'.
- Copies:** Includes a 'Number of copies' spinner set to 1, a visual representation of three stacked pages labeled 1, 2, and 3, and a checked 'Collate' checkbox.
- Print what:** A dropdown menu set to 'Document'.
- Print:** A dropdown menu set to 'All pages in range'.
- Zoom:** Includes 'Pages per sheet' (set to '1 page') and 'Scale to paper size' (set to 'No Scaling') dropdowns.

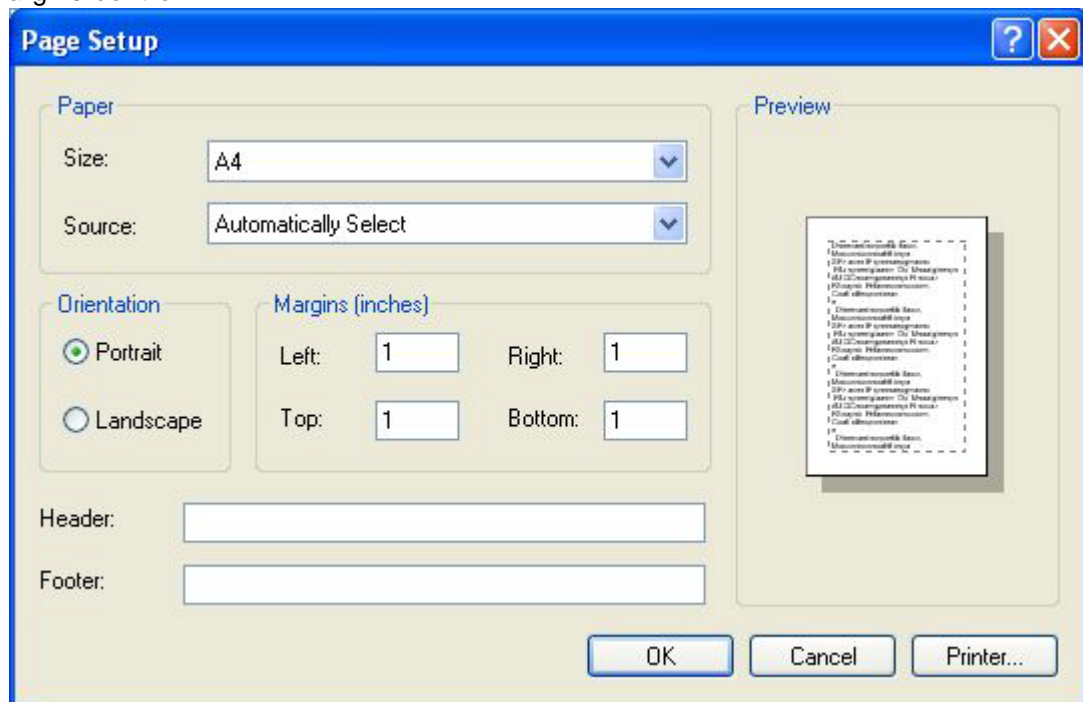
At the bottom, there are buttons for 'Options...', 'OK', and 'Cancel'.

## <Notepad>

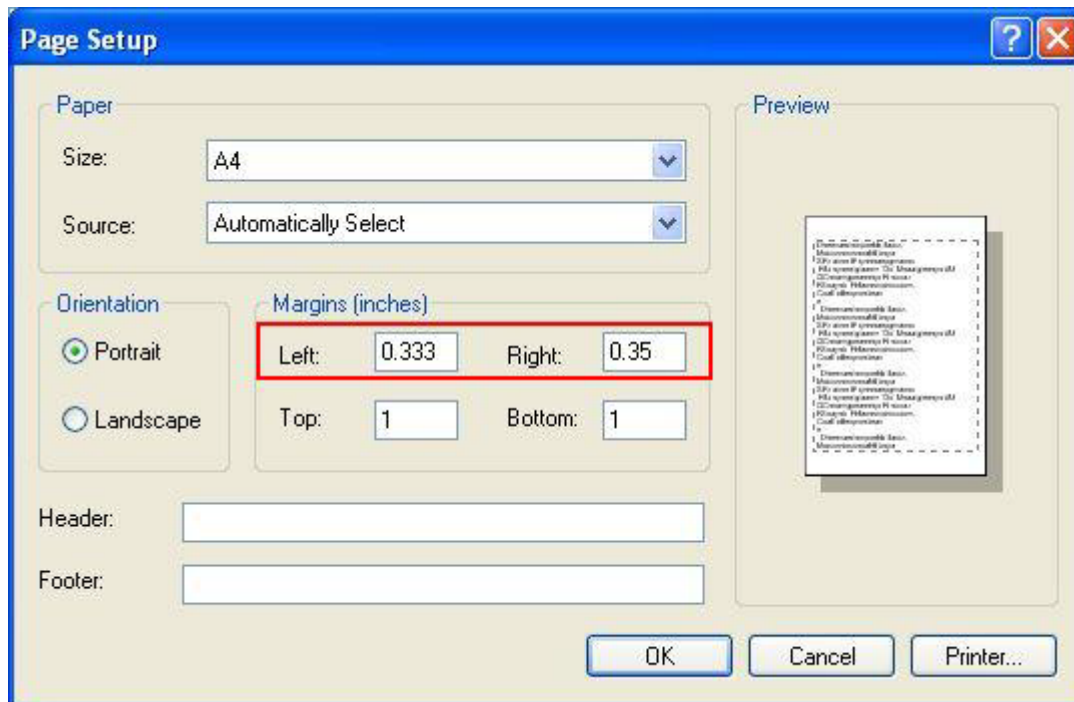
- 1) Notepad execution – Page Setup click.



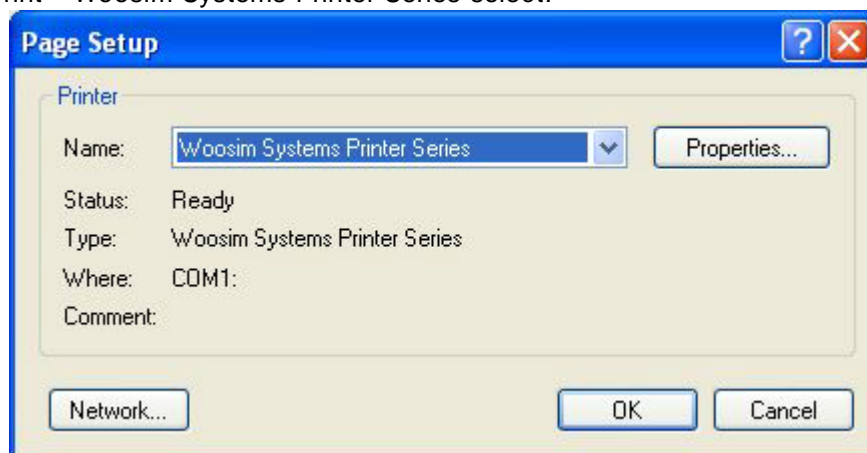
- 2) Margins control.





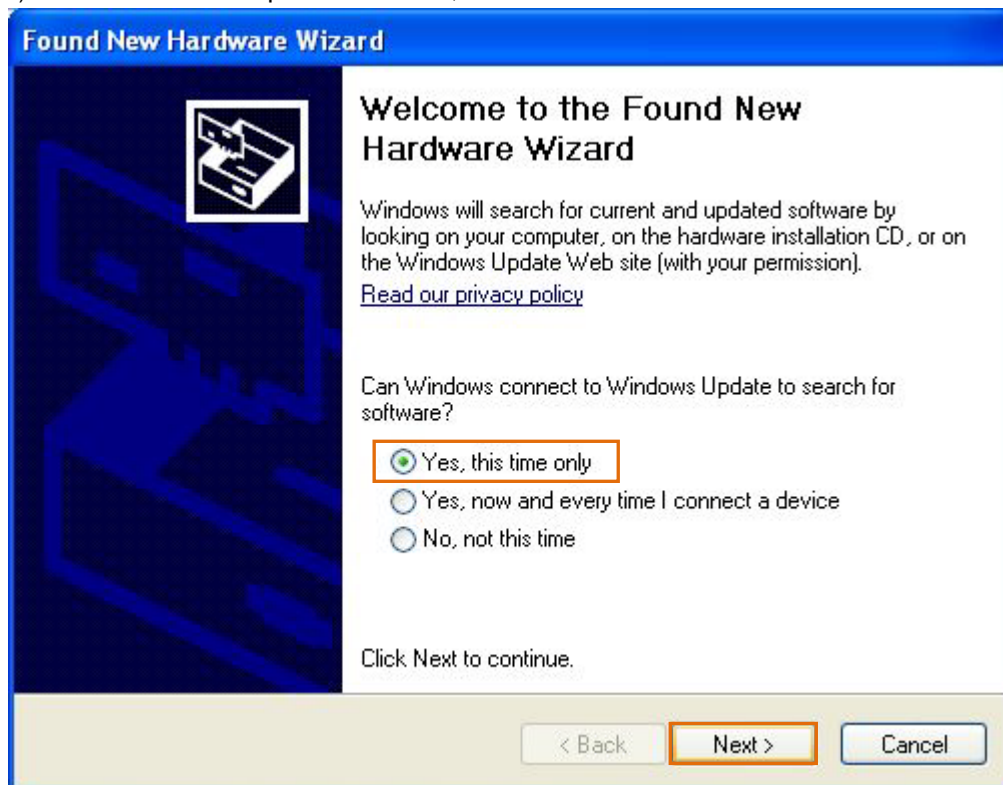


3) Print – Woosim Systems Printer Series select.

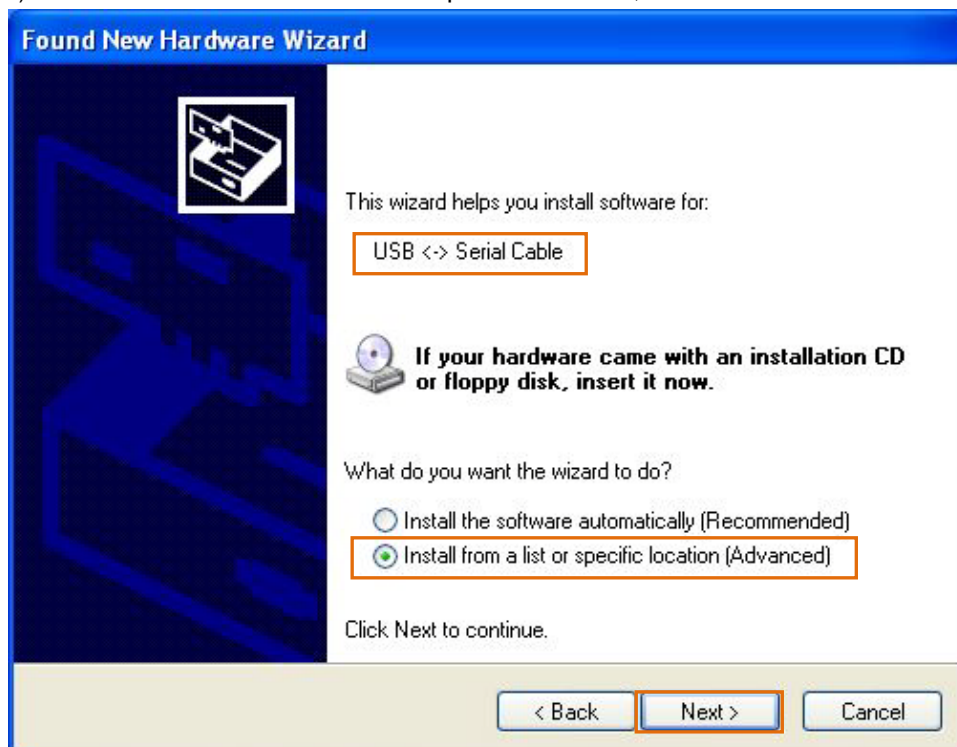


## 5. Install VCP driver(hand-operated) – USB version printer

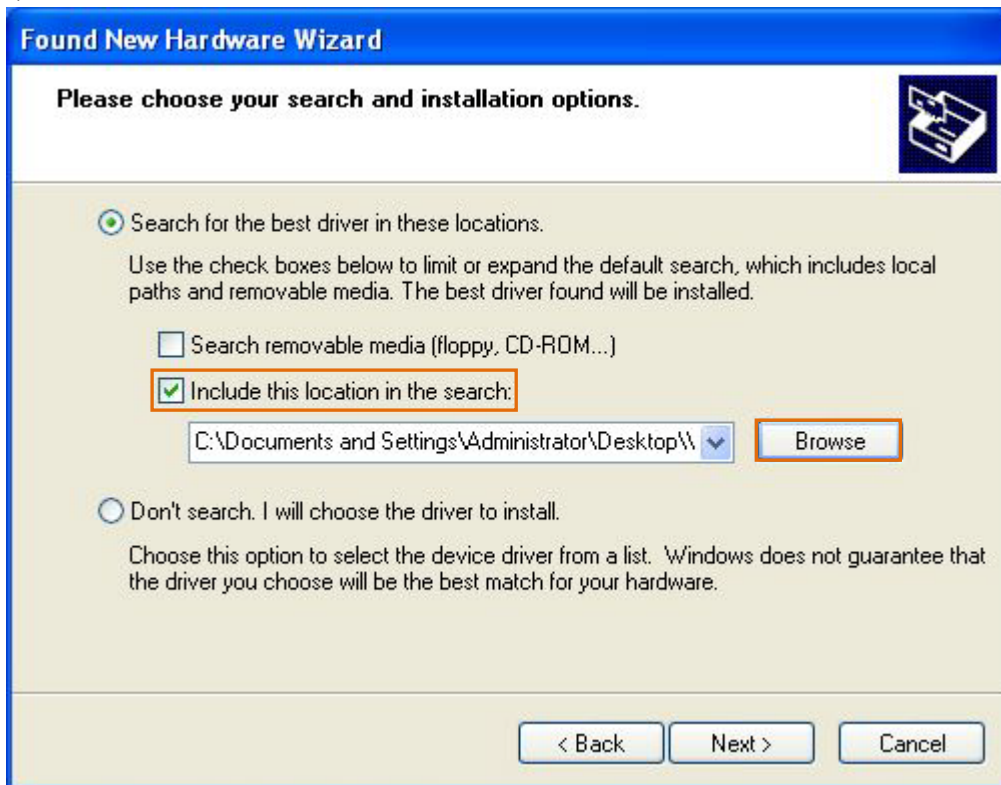
1) After connect USB port with cable, and then click next button



2) After check 'install from a list or specific location', and then click next button



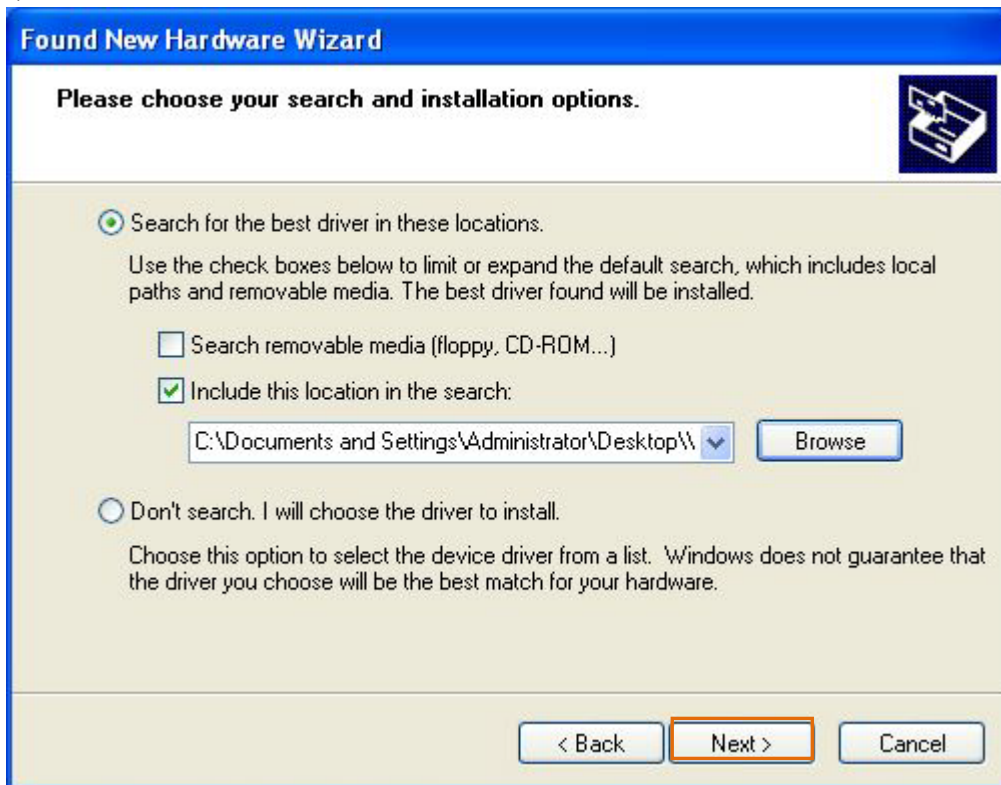
3) After check 'include this location in the search and then click Browse button



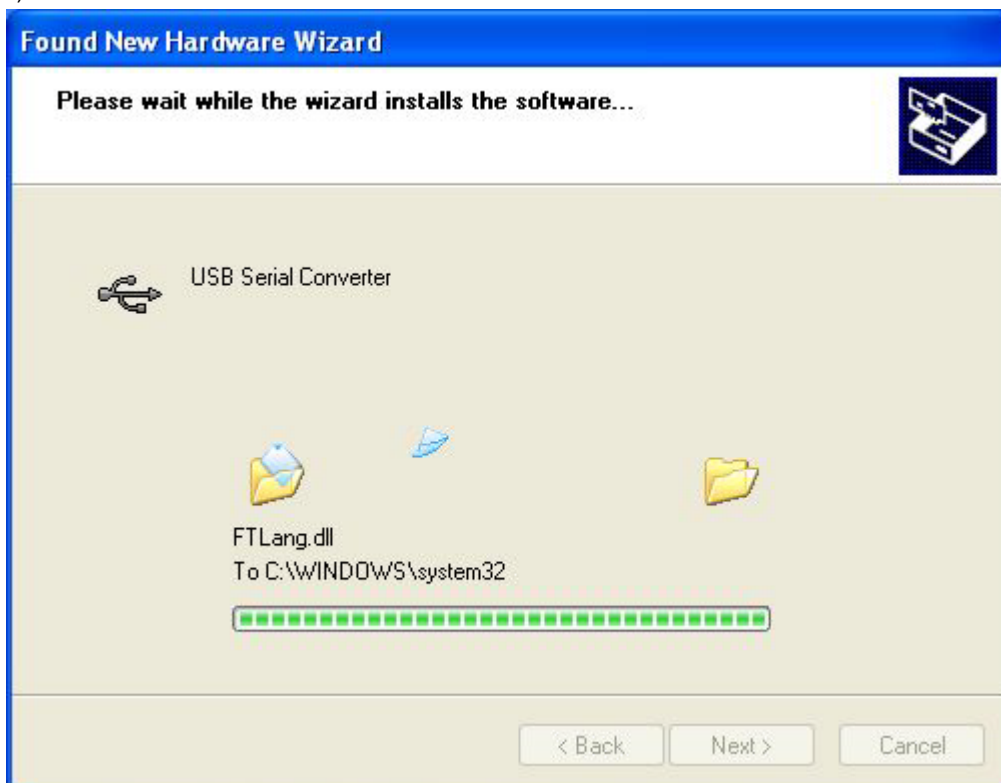
4) After select downloaded 'VCP driver' folder and then click OK button



5) Click Next button



6) install files.



7) Click Finish button

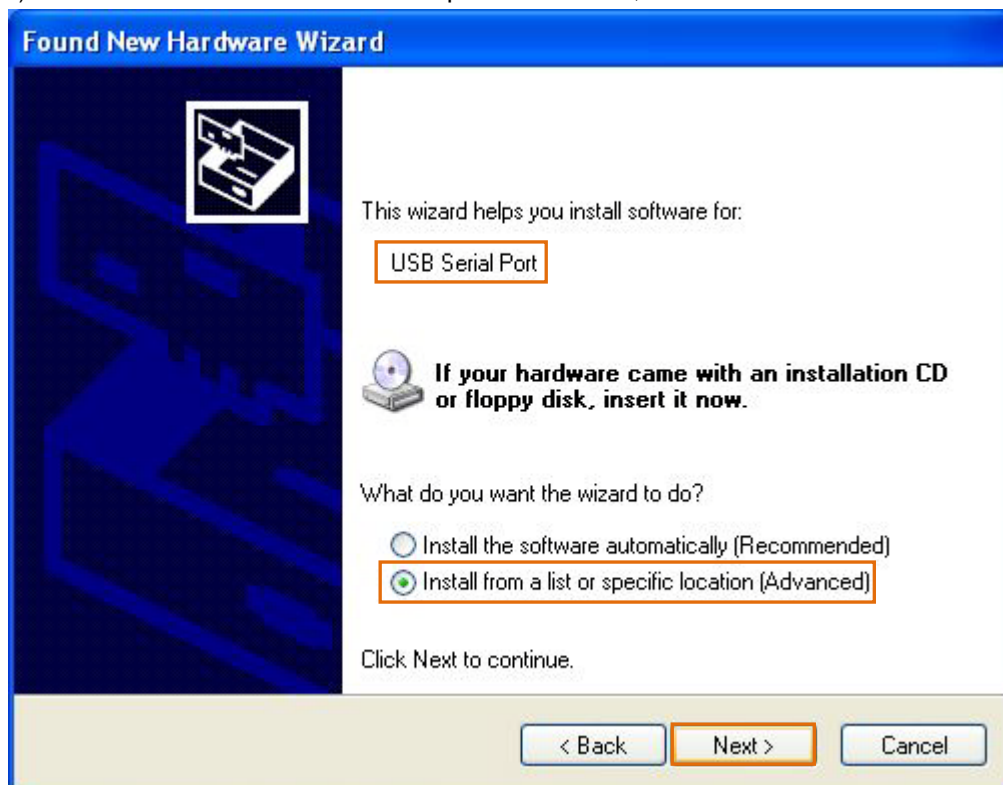


8) After check 'Yes, this time only' and then click Next button

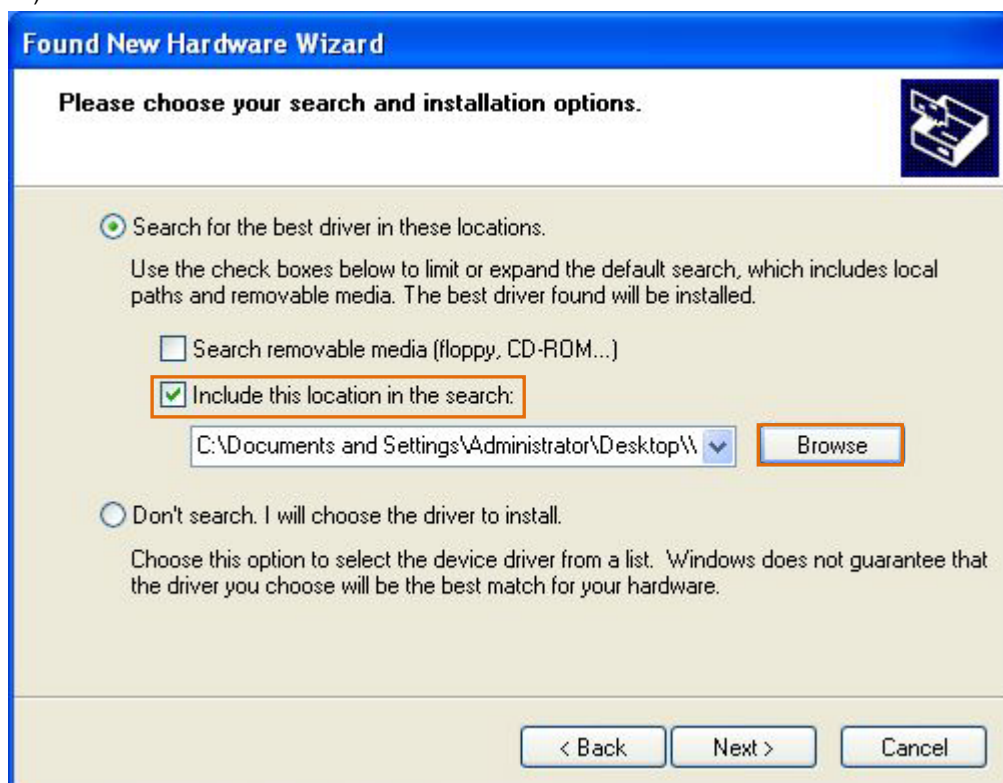




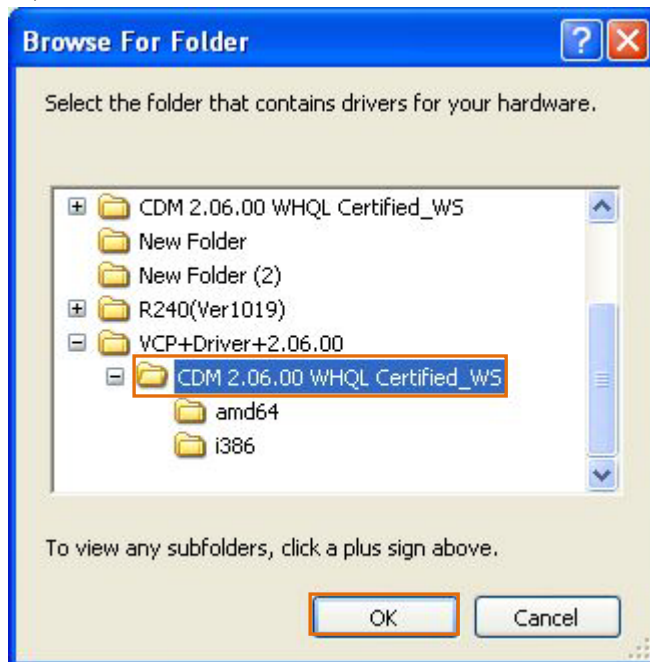
9) After check 'install from a list or specific location', and then click next button



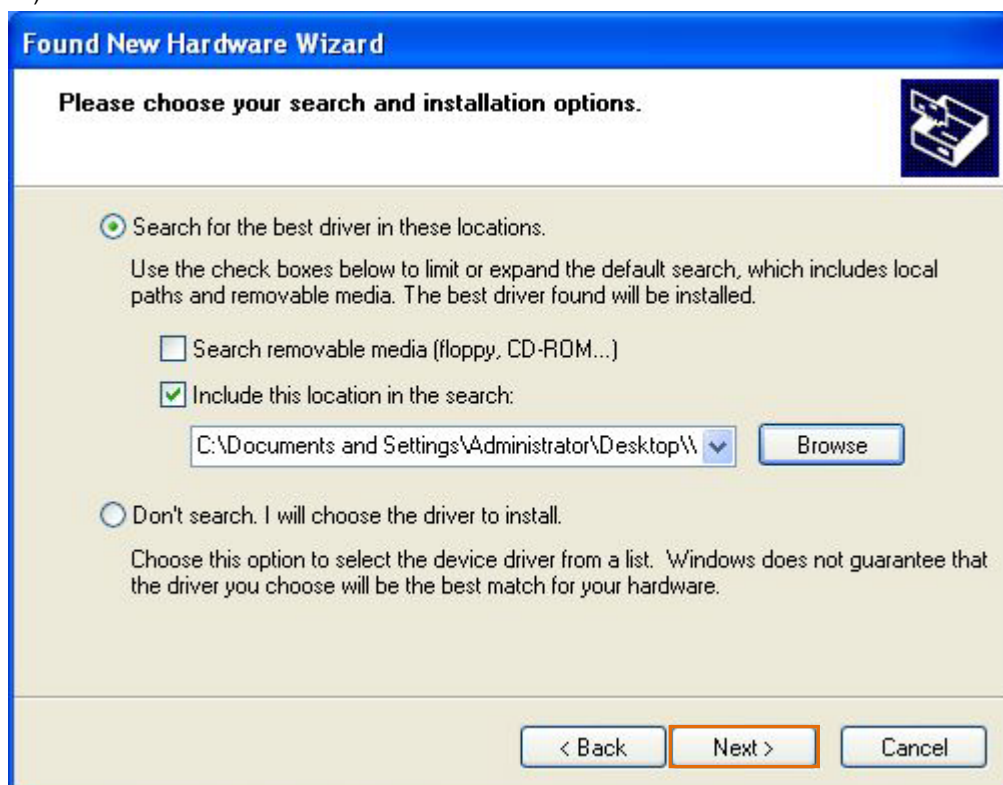
10) After check 'include this location in the search' and then click Browse button



11) After select downloaded 'VCP driver' folder and then click OK button

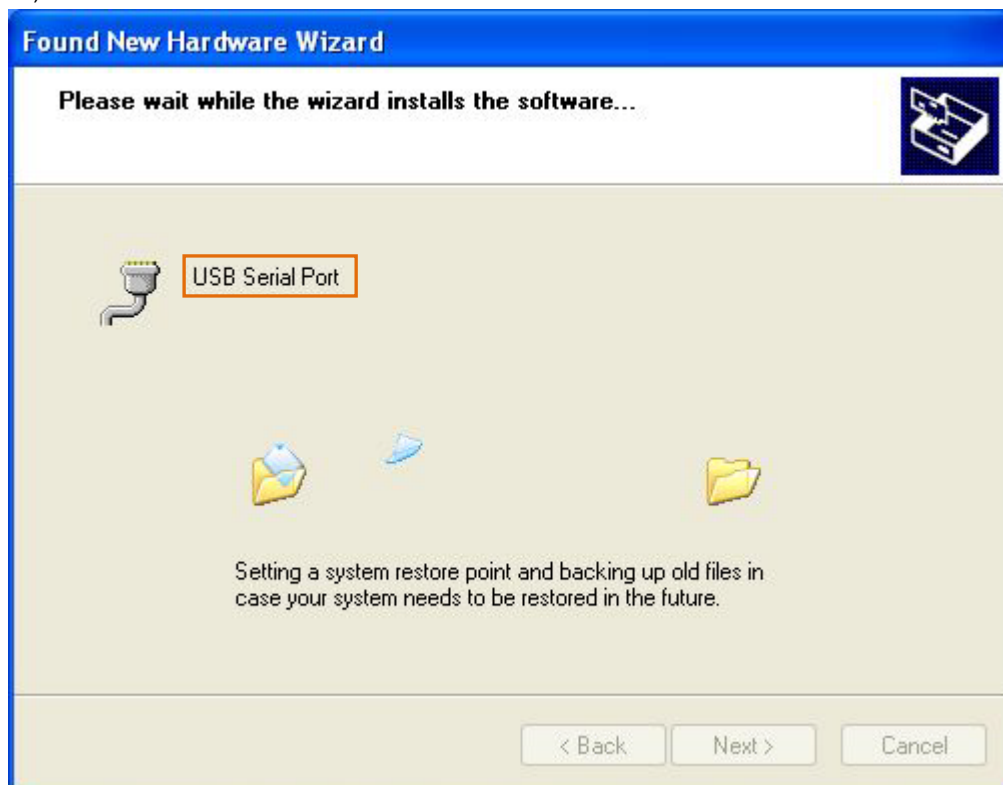


12) Click Next button





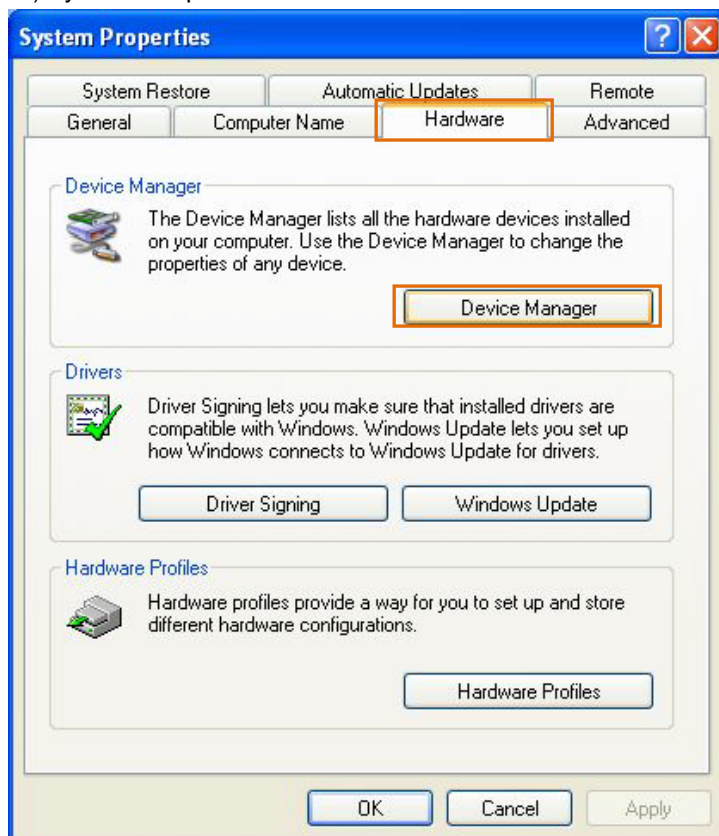
13) install files



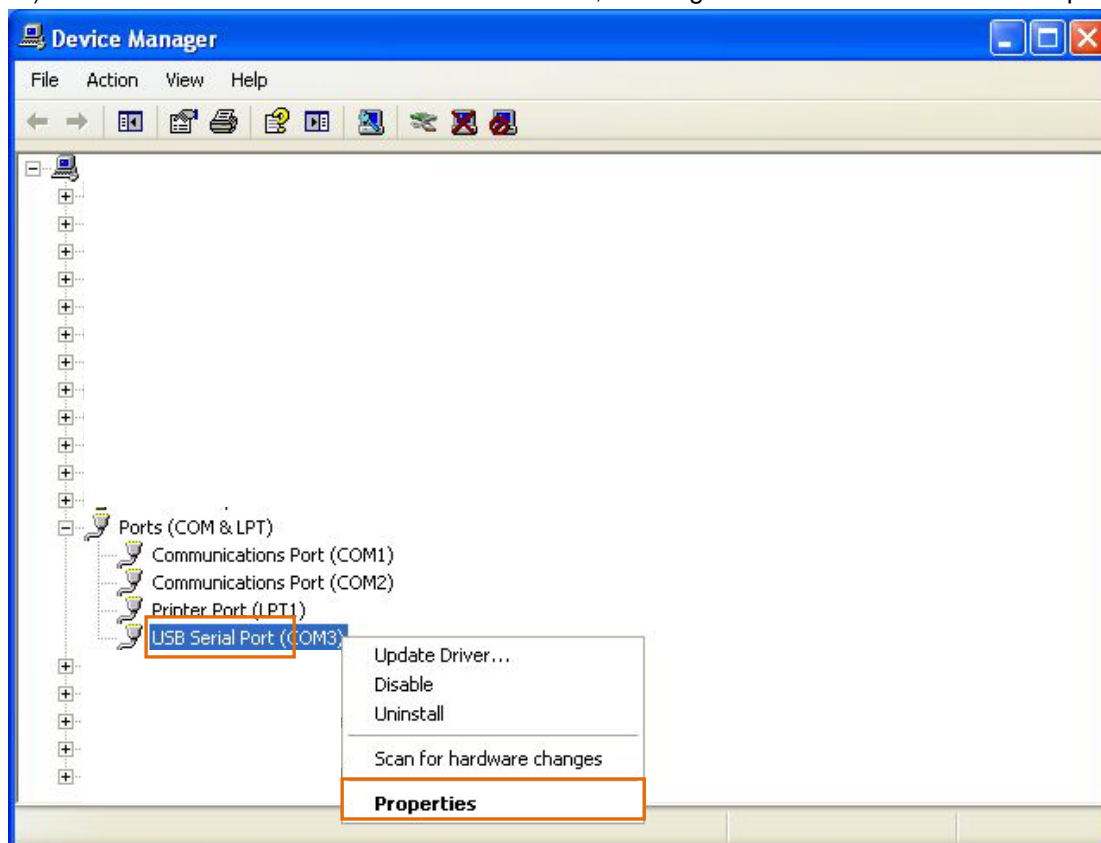
14) Click Finish button



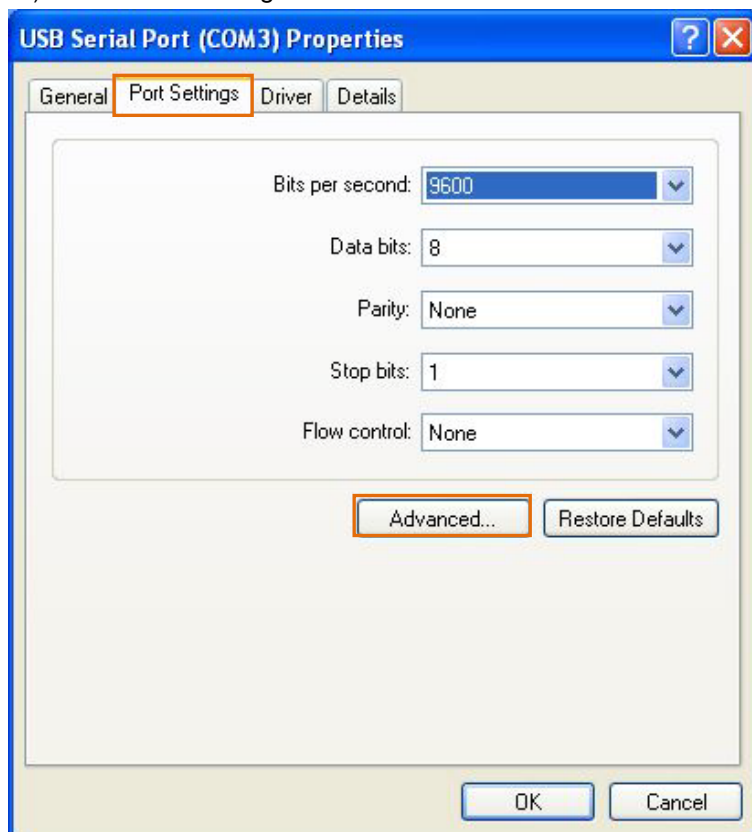
15) System Properties à Hardware tab à Click Device Manager button



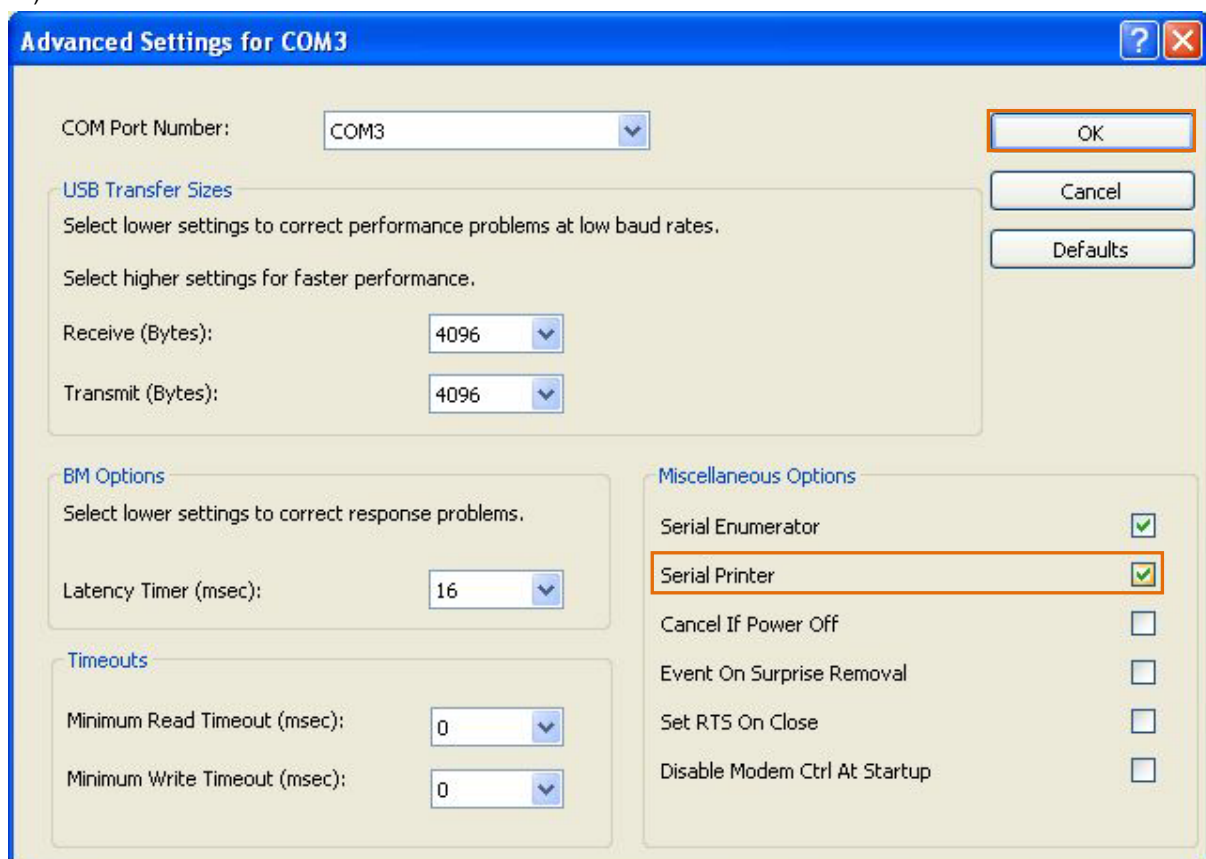
16) After check created USB Serial Port and then, click right button in mouse à Select properties



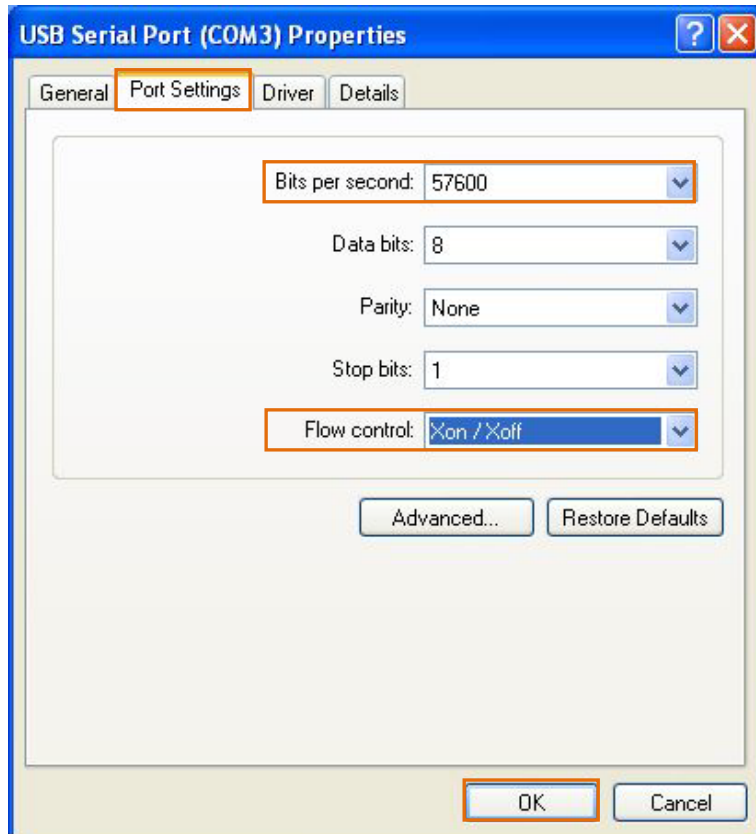
17) Select Port Settings tab à Click Advanced button



18) After select Serial Printer and then click OK button



19) Change Bits per second and Flow control and then click OK button

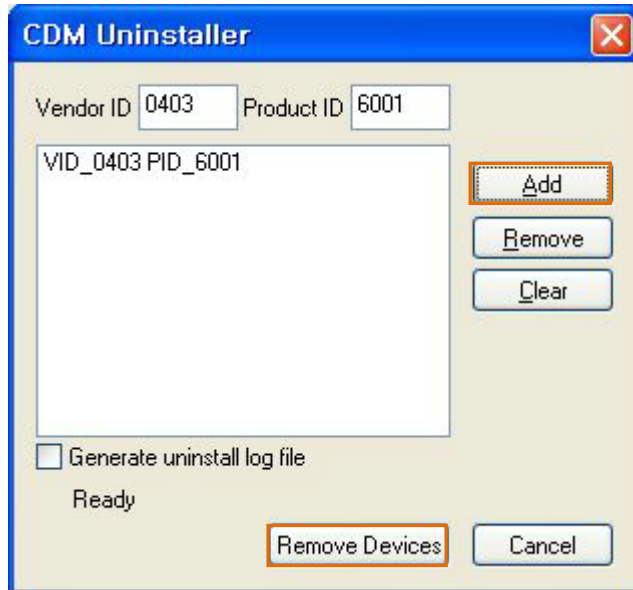


## 6. Delete VCP driver – USB version printer

1) Execute CDMuninstallerGUI\_v1.3.exe file



2) Click Add button and then Remove Devices button



3) Click OK button

