

Firmware upload on some Andig Serial RS232 printers

Firmware in some Andig RS232 printers is uploadable through the RS232 interface at the power-up with the windows software tool : AndigSerialBoot.

New firmwares are available directly from Andig.

This procedure applies for the following printers:

***MTH-2500, MTH-3500, MRSi, MRTi,
DCT-4585, DPN-256-II-##-450, DPN-2356-II-##-450
which have an embedded Serial Bootloader.***

If your printer has an USB Bootloader, please report to AN149.

Application download

This application is downloadable from the andig website.

<https://www.andig.fr/files/pdf/download/printer/software/AndigSerialBoot.zip>

Note :

The AndigSerialBoot.exe program is written with QT Creator. Therefore, in order to use this program, you will need several dll which are included in the zip file.

Firmware Selection :

Firmwares are hex files. Be sure the firmware you want to upload is written for your controller board. The programming tools doesn't check if you expect to upload an incorrect firmware.

The use of an incorrect firmware can destroy your hardware !

The selftest of your printer prints the name of its firmware, select a firmware with the same basis name, versions can be different.

```
MTH-2500
-----
SOFTWARE: F211v1.0
SN 00000001
Clock
01-01-2011
16:22'05"
Printer
Font      : Std16x24
Direction : TEXTMODE
Net       : USA
```

Firmware name

In this example, the compatible firmwares for MTH-2500 are

F211v#_#.hex like :

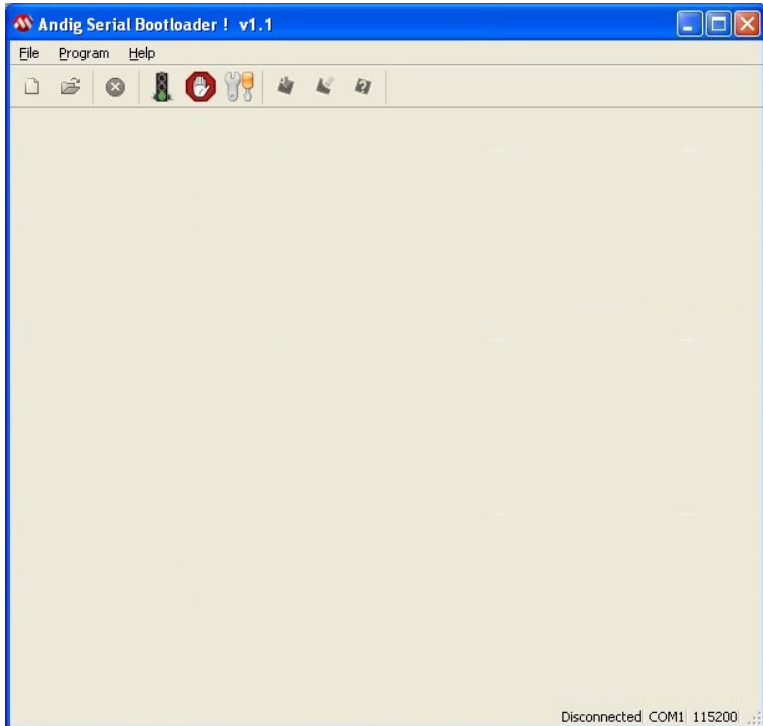
- F211v0_9.hex
- F211v1_0.hex
- F211v1_1.hex
- etc...

Firmware upload updates only the printer firmware.

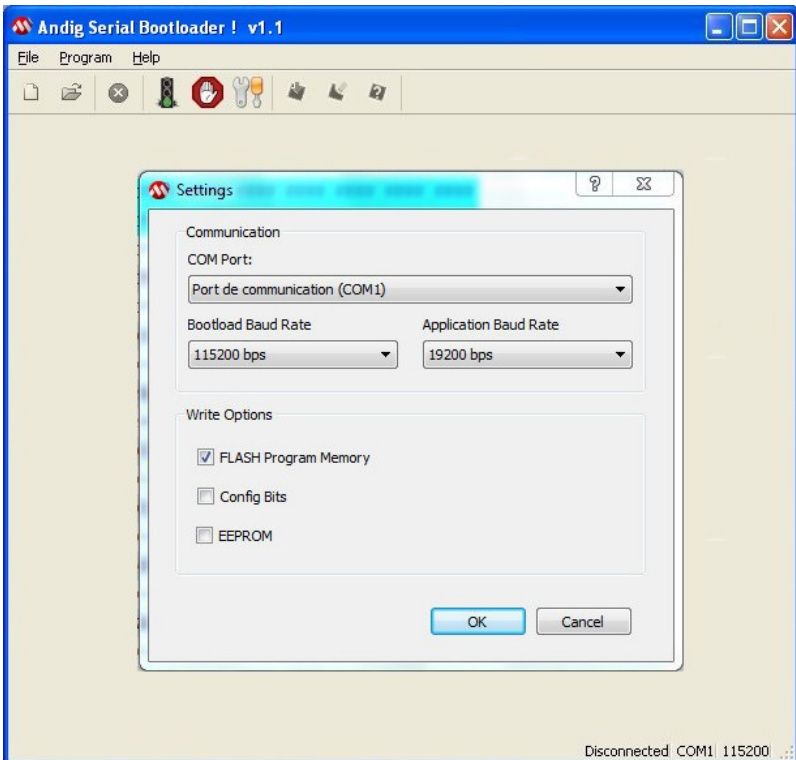
The integrated uploader, the logo or the programmed messages and the parameters are not modified. So, in case your upload fails, it is always possible to try upload it again.

Firmware upload procedure :

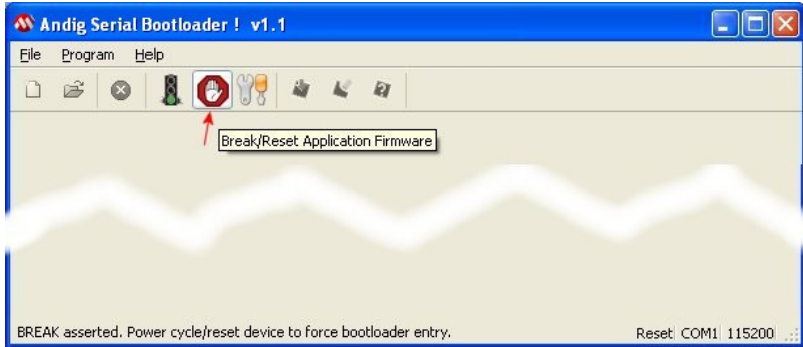
1. Power off the printer
2. Execute the AndigSerialboot.exe software. In the software window, a status line indicates that com port is disconnected.



3. With Menu Program → Settings, adjust the parameters for the application:
 - **Comport Number:** Select the comport where the printer is connected
 - **Bootload Baud Rate:** (maximum 115200 bps for windows): uses the higher baudrate for speed-up the bootloader procedure
 - **Application Baud Rate:** (not very important, it is used only when 'Run application software'). Set the same baud rate that it is used in the printer
 - **Write Option:** just select 'FLASH Program Memory'



4. Connect the RS232 cable between the computer and the printer and click on the STOP icon (Break/Reset Application Firmware)



5. Warning: On some printers, an extra pin must be closed.

On MRSi/MRTi Printers :

Close jumper L14

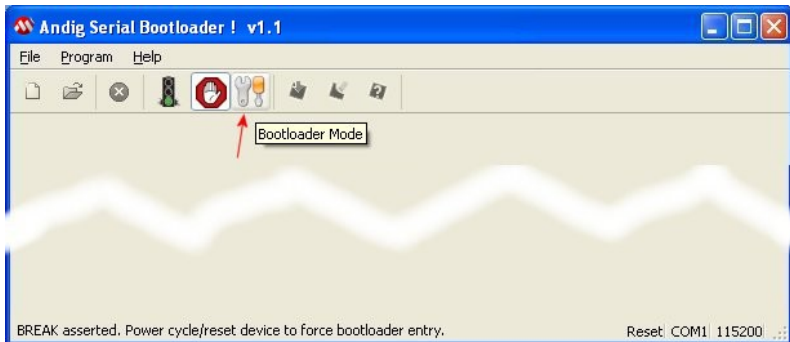
On DPN-256-II & DPN-2356-II printers :

Insert a Jumper between CN1-9 & CN1-10

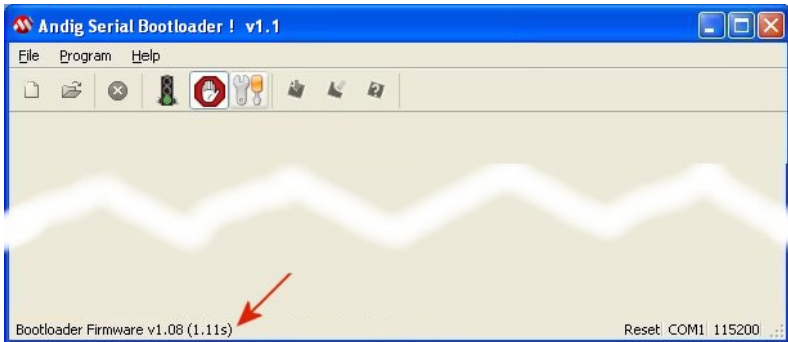
6. **Power-On the printer !**

Note: The print head doesn't start.

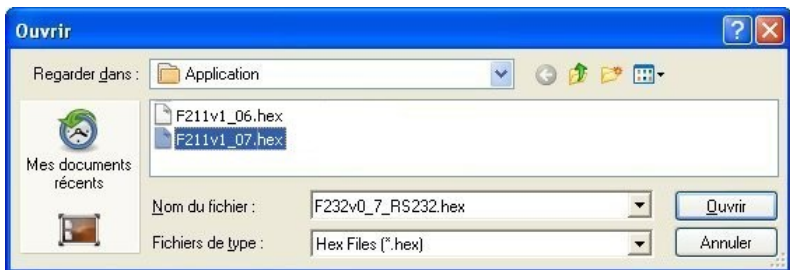
7. Then click on the "TOOL" icon (Bootloader Mode)



- AndigSerialBoot software must detect the printer, status line shows the detected Bootloader Firmware version.



- Open a new firmware, according to the version you want, with the menu « File », « Open »



10. In the editor, you can see the firmware dump.

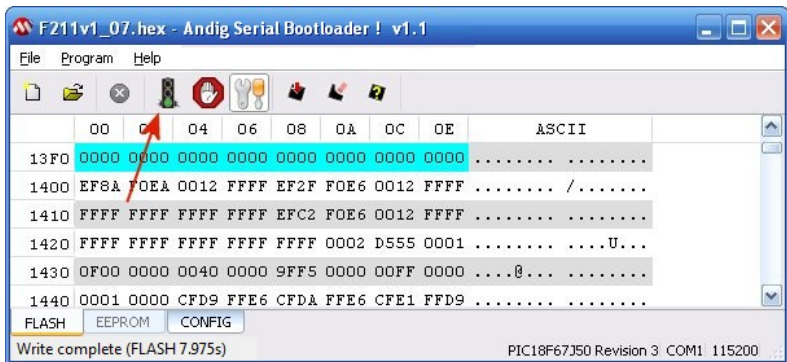
Parts highlighted in blue will not be programmed, these locations contain the bootloader firmware, the parameters and the logo in the printer.

Only part above 1400h will be programmed !



Click on the “Write Device” icon to do it.

11. Status line will indicates the progress of the firmware upload. Then it will indicates the ‘Write Complete’



12. Now the Firmware upload is **complete**.

13. Click on the “Fire Traffic” icon (Run Application Firmware).
It will reset the printer



14. Don't forget to remove the jumper on MRSi/MRTi Printers
and DPN-256-II & DPN-2356-II printers !